

- ★ Stock preparation equipment
- ★ Paper machine
- ★ Turn-key project
- ★ Upgrade and accelerate of paper machine



**Bridge Global Trade**  
Together We All Achieve..



Bridge Global Trade

Together We All Achieve..



*Integrate Chinese Resource,  
Serve World Market.*

## CONTENTS

- ◎01-02 COMPANY PROFILE
- ◎03-04 STOCK PREPARATION
- ◎47-48 STOCK PREPARATION AND PAPER  
MAKING GENERAL EQUIPMENTS
- ◎59-60 PAPER MAKING EQUIPMENTS
- ◎81-82 FINISHING EQUIPMENTS
- ◎87-88 PAPER CONVERTING AND  
PACKAGING EQUIPMENTS
- ◎93-94 SALES NETWORK



# Processing equipment

Detailed design, excellent manufacturing and strict quality control make sure the quality of our products.







## Stock preparation equipments

---

- ★ OCC pulping line
  - ★ Deinking pulp processing line
  - ★ Chemi-mechanical pulping line
  - ★ Wood pulping line
  - ★ Cotton stalk and straw pulping line
-



# Unpacker

## Application:

Widely used in pulp and paper-making industry waste paper processing system.

## Design features:

- ◇ Most of the impurities will be removed to avoid them enroll in the pulp system, so as to improve the quality of the pulp.
- ◇ Loosened waste paper parcel can reduce soaking time and improve efficiency while pulping, energy saving 10%–20%.
- ◇ Frequency control is adopted to adapt to different production requirements.
- ◇ Spraying dust removal equipment can effectively remove dust from the waste paper and clean the environment.



## Main technical data:

Model	EST3.0	EST3.25	EST3.5	EST3.75
Drum diameter (mm)	Φ 3000	Φ 3250	Φ 3500	Φ 3750
Capacity (t/d)	300–450	400–600	500–800	650–1000
Motor power (kw)	37	37	45	55
Size of materials (mm)	1000*1200*1000			
Moisture (%)	< 15			



## Drum pulper

### Five advantages:

- ◇Do not damage the fibers: comparatively soft pulping mechanism, do not damage the fibers, so as to guarantee high quality.
- ◇Do not break up impurities: maintain the integrity of the impurities, so as to reduce stress of the following section.
- ◇Minimum complementary conditions: reduce downtime, save money.
- ◇Remarkable energy saving: energy consumption is only 1/2–1/3 of traditional hydropulper.
- ◇Three in one, save cost: combine pulper, roughing, impurities removal in one, greatly save invest in pulping line.



### Main technical data:

Model	EST3000	EST3250	EST3500	EST3750	EST4000	EST4250	EST4500
Capacity (t/d)	250–300	300–400	400–550	550–750	750–1000	1000–1400	1200–1600
Drum size (mm)	3000	3250	3500	3750	4000	4250	4500
Inlet consistency (%)	14–18						
Outlet consistency (%)	3–4						
Motor power (kw)	315–355	450–500	500–560	560–800	800–1000	1000–1400	1250–1600

● The capacity may be different according to different pulp variety and consistency.  
So the capacity in the above chart is only used for choosing the model.



## D type hydrapulper

### Application:

D-type hydrapulper is more suitable for pulping OCC, commercial waste paper continuously or intermittently. It can discharge the heavy impurities from a separately setting box so as to protect the equipment from damaging by heavy impurities. Also, it can discharge plastic pieces.

### Design features:

◇New vaux rotor can strengthen hydraulic action and disintegrate fiber more effectively. D-shaped vat, changed the way of turbulence generated in the conventional pulper and intensified the turbulence. So the paper bale is quickly soaked into the liquid, the moving path of the waste paper is improved and the capacity of the pulper is increased. It can shorten the pulping time, reduce energy consumption and increase the specific capacity per unit of volume.

◇Size: 15m<sup>3</sup>–100m<sup>3</sup>

◇Capacity: 80–1000t/d





**Main technical data:**

Model	Capacity (t/d)	Effective volume (m <sup>3</sup> )	Consistency (%)	Motor power (kw)
EST15	100-150	15	3-5	165
EST20	150-200	20	3-5	185
EST25	200-250	25	3-5	220
EST30	250-300	30	3-5	280
EST35	300-350	35	3-5	315
EST40	350-400	40	3-5	355
EST45	400-450	45	3-5	400
EST50	450-500	50	3-5	450
EST60	500-550	60	3-5	560
EST70	600-700	70	3-5	630
EST80	700-800	80	3-5	710
EST90	800-900	90	3-5	900
EST100	900-1100	100	3-5	1120

● The capacity may be different according to different pulp variety and consistency.  
So the capacity in the above chart is only used for choosing the model.



## Middle consistency (wet strength paper) hydropulper

### Design features:

- ◇ The rotating rotor and the fixed rotor of this machine all use special wear-resisting alloy steel.
- ◇ Turbulence-type bed rotor, improved the dissociation ability.
- ◇ High backflow three vortex rotating rotor apply to all kinds of pulp board and waste paper.
- ◇ Intermittent operation is especially applicable for higher wet strength paper.



### Main technical data:

Model	Nominal volume (m3)	Inlet consistency (%)	Capacity (t/d)	Motor power (kw)
EST10	10	4-8	50-75	75-110
EST15	15	4-8	80-120	110-200
EST25	25	4-8	150-250	220-400
EST30	35	4-8	250-400	400-630

● The capacity may be different according to different pulp variety and consistency.  
So the capacity in the above chart is only used for choosing the model.

## O type hydrapulper

### Application:

It can be used to break up virgin pulp board, broke paper from paper machine and various kind of waste paper.

### Design features:

- ◇ Operating mode can be adjusted according to different raw material and also has wide service range.
- ◇ Size: 2m<sup>3</sup>–70m<sup>3</sup>
- ◇ Capacity: 15–600t/d



## High consistency hydrapulper

### Application:

It can be used for breaking up waste paper in high consistency during deinking processing line.

### Design features:

- ◇ Compact structure; high rotation efficiency.
- ◇ Three vortex tower type rotors will promote pulp circulation effectively and strengthen friction between pulp fibers. It can achieve moderate beating in high consistency state and disintegrate fiber with no impurity been broke up.
- ◇ Size: 5m<sup>3</sup>–50m<sup>3</sup>
- ◇ Capacity: 20–360t/d





## Drum screen

### Application:

Drum screen is usually installed after pulper or impurity separator. It can screen out all kinds of light or heavy impurities whose geometric shape is larger than  $\Phi 10\text{mm}$ , such as plastic, rubber, sand, stone, metal pieces, film, etc.

### Design features:

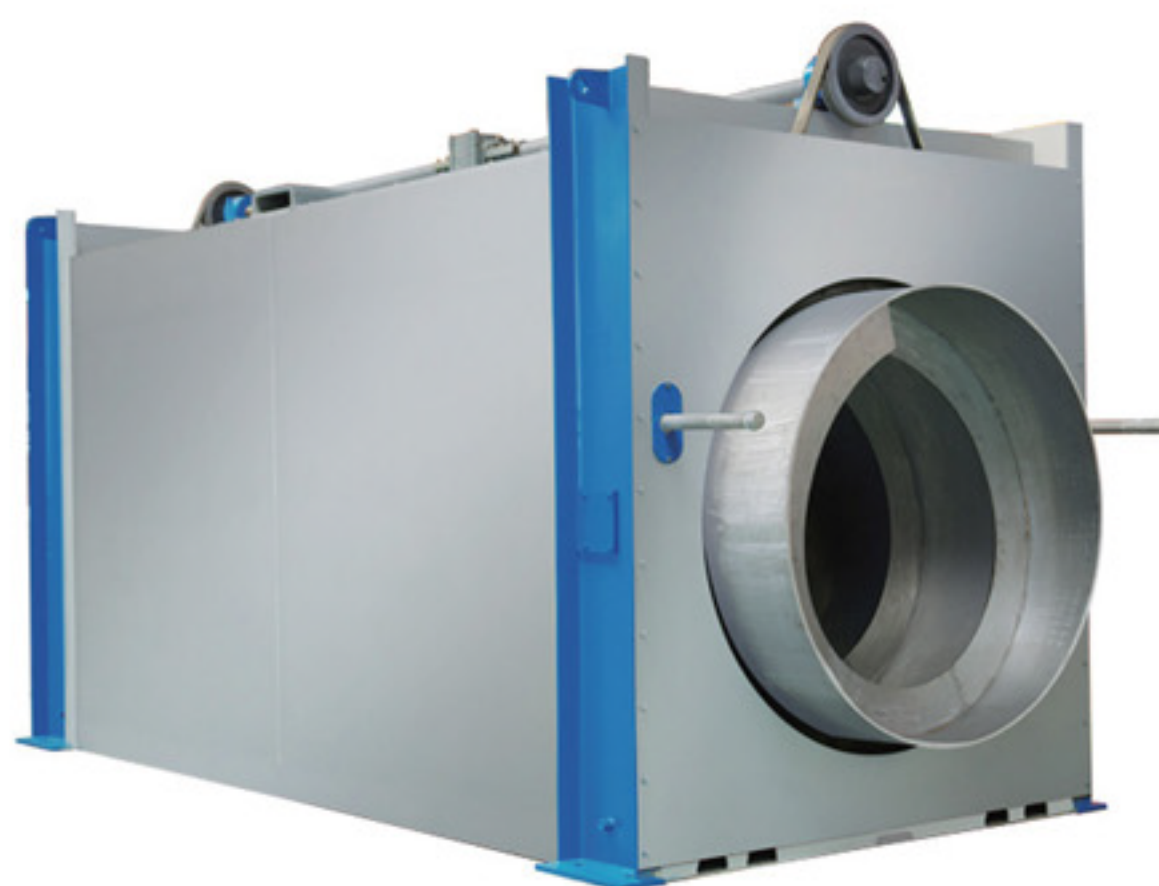
◇ While the screen drum rotating, pulp will be conveyed forward. By gravity, accepts and tiny impurities will enter the vat through  $\Phi 8-14\text{mm}$  screen slot; larger impurities retained on screen plate will be pushed forward to the end by screw flight. The fiber adhered to the impurities will be washed off by water ejected from the fan nozzles in order to prevent fiber loss.

◇ Simple structure; safe and reliable in operation and high efficiency in coarse screening.

◇ Used with the hydropulper system to screen out coarse impurities and improve the purifying efficiency of process.

◇ Size:  $\Phi 1000\text{mm}-\Phi 2500\text{mm}$

◇ Capacity: 3000-1000L/min



### Main technical data:

Model	EST1000	EST1500	EST2500
Throughput(m <sup>3</sup> /min)	2-5	3-6	4-8
Drum size(mm)	$\Phi 1000$	$\Phi 1500$	$\Phi 2500$
Screen hole (mm)	$\Phi 8-14$		
Motor power(kw)	5.5	7.5	18.5

● The capacity may be different according to different pulp variety and concentration.  
So the capacity in the above chart is only used for choosing the model.



# Impurity separator

## Application:

Impurity separator combines the functions of fiber disintegration and impurities separating into one. It is installed after pulper and used for separating light and heavy impurities, and disintegrates the stock that the hydropulper hasn't pulped.

## Design features:

- ◇ It consists of steel shell, horizontal defibering impeller, drive, inlet and outlet pipe, etc.
- ◇ With the weir plate inside the separator, the heavy impurities settle down to the bottom, then the stock and the light impurities enter into the circulation zone. The stock is suctioned axially and thrown out from the periphery of the impeller with high-speed to form strong turbulence circulation.
- ◇ The quality and the throughput of the stock can be controlled by adjusting the weir and the clearance between the impeller and the screen plate.
- ◇ Impurity separator works together with the pulper in order to separate the light and heavy impurities from waste paper stock, as well as to increase the capability of the pulper.
- ◇ Waste paper stock can be handled with coarse screening efficiently, which results in simplifying the process and saving power consumption.
- ◇ Size: 1.2m<sup>3</sup>–5.0m<sup>3</sup>



## Main technical data:

Model	EST1	EST2	EST3
Nominal volume (m <sup>3</sup> )	1.2	3	5
Pulp consistency (%)	3–5		
Capacity (t/d)	35–45	60–80	100–130
Motor power (kw)	45–55	75	160
Overall size (mm)	3350*2350*1565	3760*1750*2700	4650*2000*3200

● The capacity may be different according to different pulp variety and consistency. So the capacity in the above chart is only used for choosing the model.



## Ragger

### Application:

It works together with the hydropulper and served as coarse screening equipment. It twists all light impurities in waste paper stock (such as wires, plastics, cotton yarns, etc) into a strand and takes them out from the pulper.

### Design features:

- ◇The ragger mainly consists of the case, drive unit, winch wheel, elevator with loading wheel, etc.
- ◇The drive unit consists of the drive shaft, bearing, winch wheel and the 2-stage reducer connected directly with the reducer.
- ◇The elevator with loading wheel consists of the pneumatic cylinder, reversing valve, loading wheel and the loading arm, etc.



### Main technical data:

Model	EST1	EST2
Ragging speed (m/h)	0-30	
Motor power (kw)	2.2	3.0
Speed ratio of reducer	29*29	
Compressed air pressure(mpa)	≥0.15	

●The capacity may be different according to different pulp variety and consistency. So the capacity in the above chart is only used for choosing the model.

## Cutting machine

### Application:

Cutting machine is equipped with the ragger so as to cut the rejects strand twisted by the ragger into small pieces, which enables the convenient process in the following procedures.

### Design features:

- ◇The knife of the cutting machine is pushed by hydraulic piston, which has great cutting force.
- ◇The compact structure helps to bear the operation with heavy burden.



## Grapple

### Application:

It is used to remove heavy impurities in trash well during continuous pulping.

### Design features:

- ◇It can effectively reduce abrasion to impeller and screen plate of the pulper.
- ◇Easy to operate.
- ◇Size: 0.05m<sup>3</sup>-0.20m<sup>3</sup>





# High/middle consistency cleaner

## Application:

It is used to remove heavy impurities contained in the stock.

## Design features:

- ◇Feeding pipe with a certain inclination angle will form a strong force of vortex flow to separate the heavy impurities effectively.
- ◇Cone body is adopted alumina wear resistant ceramic which ensures long service time.
- ◇Two-cone structure reduce fiber loss while raise heavy impurity separation efficiency.
- ◇Controlled by PLC automatic system, economize on manpower and materials.

## Main technical data:

Capacity: 70–500t/d

Throughput: 900–12000m<sup>3</sup>/min





## Low consistency cleaner

### Application:

It is used for pulp cleaning before paper machine.

### Design features:

- ◇Special abrasive resistance material ensures durable.
- ◇Adopted advanced centrifugal clarification technology to make sure high accepts cleanness with high efficiency.
- ◇Closed reject discharging system result in cleaner operation environment.
- ◇Easily to assembly and disassembly; change with fission construction.
- ◇Compact conformation, cover small floor area.

### Main technical data:

Capacity: 15-400t/d

Throughput: 600-800m<sup>3</sup>/min





## Single effect fiber separator

### Application:

It combines defibering, separating and screening in one. As secondary pulping equipment, it is normally a downstream equipment of the hydropulper. It can also work as tailings processing equipment.

### Design features:

- ◇ Three fundamental functions: secondary defibering, separating light impurities, removing heavy and coarse impurities.
- ◇ It is possible to use the poor waste paper and reduce the treatment of the raw material with the help of this machine.
- ◇ It can increase the production capability of existing hydropulper and reduce the specific energy consumption by about 40%–60%.
- ◇ It can help to obtain high quality stock, reduce fiber loss and increase screening efficiency. The production capability can be 2–2.5 times of the traditional one.



### Main technical data:

Model	EST500	EST700	EST900		EST1100	EST1280	EST1420
Capacity (t/d)	83	100	160	230	300	360	420
Motor power (kw)	30	45	55	75	110	132	160
Consistency (%)	3.5–4.5						

● The capacity may be different according to different pulp variety and consistency. So the capacity in the above chart is only used for choosing the model.



## SCS series up-flow pressure coarse screen

### Application:

Used for various waste paper pulp of coarse screening.

### Design features:

◇Adopted the new high efficiency and energy saving up-flow screen rotor developed based on the fluid dynamics, it has the characteristics of high performance, big let flow processing capability, save 30%–60% of the power consumption and improve the efficiency of screening.

◇With special designed high flow structure, obtain higher producing capability; up-flow design, prolong the service life of the consumables.



### Main technical data:

Model	EST400	EST500	EST600	EST700	EST1000	EST1300
Hole size (mm)	Φ1.2–2.6					
Slot size (mm)	0.3–0.7					
Capacity (t/d)	250–400	350–500	400–600	500–700	900–1000	1100–1300
Inlet consistency (%)	2.5–3.5					
Inlet pressure (mpa)	0.15–0.3					
Motor power (kw)	11–22	22–37	37–55	55–75	75–90	90–150

●The capacity may be different according to different pulp variety and consistency.  
So the capacity in the above chart is only used for choosing the model.



## UV series up-flow pressure screen

### Application:

Used for screening waste paper pulp.

### Design features:

- ◇ Up-flow design can shorten a retention time of light impurities in screening area.
- ◇ Heavy impurities are isolated and dropped to the bottom to avoid excessive abrasion to rotor and cylinder.
- ◇ There is a function of breaking to some extent.



### Main technical data:

Model	EST0.6	EST0.8	EST1.2	EST2.0	EST3.0	EST4.0
Hole size (mm)	Φ 1.2-Φ 3.0					
Slot size (mm)	0.15-0.75					
Capacity (t/d)	25-100	35-130	45-160	80-350	120-450	180-550
Inlet consistency ( % )	1-3					
Inlet pressure	0.1-0.4					
Motor power	22-45	37-75	55-110	75-132	110-220	132-220

● The capacity may be different according to different pulp variety and consistency.  
So the capacity in the above chart is only used for choosing the model.



## Fiber fractionating screen

### Application:

Used for separate long and short fiber in stock.

### Design features:

- ◇ Special rotor structure, ensure a unified speed of fiber passing through screen slot, overcome the phenomenon of increasing consistency effectively.
- ◇ Protrude structure and optimized arrangement of rotor makes a fluidization of screening area and good fiber fractionation effect.



### Main technical data:

Model	EST1.2	EST2.0	EST3.0	EST4.0	EST6.0
Slot size (mm)	0.15-0.3				
Capacity (t/d)	70-120	110-200	180-320	220-500	350-650
Inlet consistency (%)	1.5-3				
Inlet pressure (mpa)	0.15-0.3				
Motor power (kw)	22-75	55-90	110-160	132-200	185-280

● The capacity may be different according to different pulp variety and consistency.  
So the capacity in the above chart is only used for choosing the model.



# Inflow pressure screen

## Application:

It can be used as pulp screening equipment before paper machine or fine screening in pulp production system.

## Design features:

- ◇ Impurities in the outside of the screen cylinder and get rid of the screen cylinder in the centrifugal force generated by rotor's rotation, which lessen the abrasion of the screen cylinder and prolong its life.
- ◇ Separate the impurities from the fiber in good effect to avoid block of the screen slot in the condition of proper flow and low pulsing force.
- ◇ Its performance can promote the paper machine to be in proper running with less broken paper.
- ◇ Great throughput with more long fiber; lower power consumption; high screening efficiency with less rejects



## Main technical data:

Model	EST0.6	EST0.9	EST1.2	EST1.5	EST2.0	EST2.5	EST3.5	EST4.5	EST6.0
Inlet consistency (%)	0.5–1.2								
Inlet pressure (mpa)	0.1–0.3								
Motor power (kw)	15–22	18.5–30	22–37	30–45	37–55	37–75	45–110	55–132	75–160
Capacity (t/d)	20–30	25–60	30–80	40–120	80–210	100–230	140–280	180–350	230–500

● The capacity may be different according to different pulp variety and consistency.  
So the capacity in the above chart is only used for choosing the model.



## Outflow pressure screen

### Application:

It can be a coarse screen or a fine screen for all kinds of pulp and different screening processes.

### Design features:

- ◇It is suitable to be as fine screen for waste paper. The screen cylinder gains long life and high throughput with the bar structure. It is convenient to clean the screen slot with high pulsing frequency in the structure of multi-foil or drum rotor. The multi-foil rotor promotes the axial mixture for the stock to avoid stock thickening in the screening process.
- ◇Good adaptability with high production capability.
- ◇High production efficiency with high flow speed.
- ◇High removal of the adhesive materials.
- ◇Lower power consumption; simple structure and easy maintenance.



### Main technical data:

Model	EST0.4	EST0.8	EST1.2	EST1.5	EST2.0	EST3.0	EST4.0
Hole size (mm)	Φ1.2-Φ3.0						
Slot size (mm)	0.15-0.75						
Capacity (t/d)	50-100	60-200	80-300	90-360	120-450	180-600	220-900
Inlet consistency (%)	High consistency2%-5%    Low consistency0.6%-2%						
Inlet pressure (mpa)	0.15-0.3						
Motor power (kw)	15-55	30-75	30-90	45-110	75-132	110-260	132-280

● The capacity may be different according to different pulp variety and consistency.  
So the capacity in the above chart is only used for choosing the model.



## CR series drum type coarse screen

### Application:

It is a coarse screen for screening fibers of waste paper and removing light or heavy impurities. It is especially suitable for waste paper recycling system to remove heavy impurities.

### Design features:

- ◇ It combines high efficiency screening and cleaning into one.
- ◇ The rotor is fixed at the end of accepts in order to reduce the resistance of accepts passing through screen slots and increase the throughput per area unit of drum cylinder.
- ◇ It discharges heavy impurities periodically and discharges light impurities continuously.
- ◇ Simple structure, easy to operate.
- ◇ High screening efficiency.



### Main technical data:

Model	ESTC2R	ESTC4R	ESTC6R	ESTC8R
Screen area (m <sup>2</sup> )	0.5	1	1.5	2
Inlet consistency (%)	< 3			
Hole size (mm)	Φ2.4-Φ4			
Inlet pressure (mpa)	< 0.25			
Capacity (t/d)	30-60	80-180	150-300	150-380
Motor power (kw)	22-37	45-55	75-110	110

● The capacity may be different according to different pulp variety and consistency.  
So the capacity in the above chart is only used for choosing the model.



☆Various pressure screen





# Vibration screen

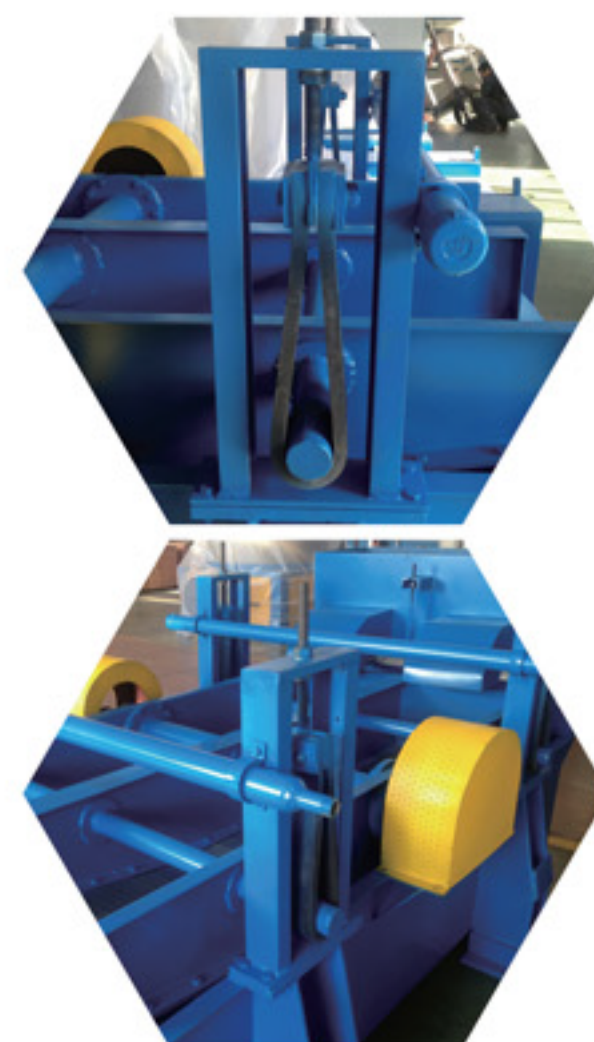
## Application:

It is widely used for coarse screening of different kinds of pulp such as chemical pulp, semi-chemical pulp, mechanical pulp, TMP and waste paper pulp.

It is also used in fiber recovery from the rejects and scruff pulp in the pressure screen and separator.

## Design features:

- ◇ Damping device is made of special rubber screen, made the frame vibrate steadily.
- ◇ Two kinds of structure: spring type and condole belt type.
- ◇ Screen plate has higher self-cleaning ability thanks to special air seal room.



## Main technical data:

Model	EST(d)1	EST(d)2	EST(d)3	EST(d)4	EST(d)5
Screen area (m2)	1	2	3	4	5
Inlet consistency (%)	Hole screen	1.2-1.5			
	Slot screen	0.5-0.8			
Screen plate (mm)	Hole size	φ 2.5-12			
	Slot size	0.5-0.75			
Motor power (kw)	2.2	3	4	5.5	5.5
Overall size (mm)	2810*1930*1425	2810*1310*2220	2810*3245*1430	3590*3480*1480	4105*3332*1495

● The capacity may be different according to different pulp variety and consistency.  
So the capacity in the above chart is only used for choosing the model.



## Rejects separator

### Application:

It is mainly used in screening system as a part of waste paper processing line or used with other vibration screen. It can screen the rejects stock with high contents of light impurities.

### Design features:

- ◇Stock flows into impurity separator under normal pressure. Affected by the centrifugal force from high-speed rotating rotor, accepts are separated from the rejects by passing through the screen plate. At the same time, with the rotating effect of the rotor, accepts will flow into the next process and the rejects will be disintegrated again. Furthermore, the rejects will be flushed continuously with water in order to recycle the stock in the rejects.
- ◇Low energy consumption and cost reduction.
- ◇After processed, there are less fiber and less water in the rejects.



### Main technical data:

Model	EST280	EST380
Size (mm)	Φ 280	Φ 380
Inlet consistency (%)	1-2	
Capacity (t/d)	10-15	25-40
Motor power (kw)	30-37	37-45

- The capacity may be different according to different pulp variety and concentration. So the capacity in the above chart is only used for choosing the model.



# High-speed washer

## Application:

It is used for washing and thickening in waste paper pulp processing.

## Design features:

- ◇ Pressure type gunting, pulp thick and well-distributed.
- ◇ High speed (900m/min), twinver com-press, pulp dewatering fast, high rate ash removal.
- ◇ Equipped automatic correction device, adopted electromagnetic motor speed control, easy operation and working safety.



## Main technical data:

Model		EST10	EST15	EST20	EST25
Working width (mm)		1000	1500	2000	2500
Inlet consistency (%)		0.8-1.5			
Outlet consistency (%)		8-15			
Capacity (t/d)	MOW	40-70	55-100	70-130	90-160
	ONP	30-50	40-70	50-90	60-110
Ash removal (%)		≥90			
Power of main motor (kw)		30	37	55	75
Power of motor for screw conveyor (kw)		5.5	5.5	7.5	7.5

● The capacity may be different according to different pulp variety and consistency.  
So the capacity in the above chart is only used for choosing the model.



## Disc thickener

### Application:

Disc thickener is mainly used for washing and thickening pulp in pulping and papermaking process. It dewater by gravity through level difference between pulp out of disc wire and white water in the disc. The pulp at the consistency of 0.8%~1.2% enters into the vat and then is attached to disc sector. The white water in the disc flows into the ends of the hollow shaft through slot and then discharges out. Pulp attached on disc sector is peeled off by high-pressure water. The thickened pulp at the consistency of 3%~6% flows over the plate of adjusting valve into outlet vat where it is discharged out. The outlet consistency and capacity can be regulated by adjusting the rotating speed of the main shaft.

### Design features:

- ◇Higher efficiency and less space required.
- ◇Disc sector is made of stainless steel with excellent corrosion resistance.
- ◇Thanks to the scallop structure of the disc sector, the filtration area is large, which allows filtrating large amount of white water when operating.
- ◇The consistency of the white water filtrated by it is lower than that filtrated by the common cylinder wire thickener.



### Main technical data:

Model	EST2510	EST2512	EST2514	EST2516	EST3510	EST3512	EST3514	EST3516	EST3518
Diameter of disc (mm)	2500	2500	2500	2500	3500	3500	3500	3500	3500
Number of disc (n)	10	12	14	16	10	12	14	16	18
Nominal area (m <sup>2</sup> )	75	90	105	120	150	180	210	240	270
Inlet consistency (%)	0.8–1.2								
Outlet consistency (%)	3.5–4.5								
Capacity	0.9–1.2								
(t/m <sup>2</sup> .d)	1.5–2.4								
Motor power (kw)	11		15		18.5	22		30	

● The capacity may be different according to different pulp variety and consistency. So the capacity in the above chart is only used for choosing the model.



# Cylinder thickener

## Application:

It is used for washing and thickening low consistency pulp.

## Design features:

- ◇ Simple structure, safe in operation.
- ◇ It is easy to control the outlet consistency and white water consistency.
- ◇ High bulk pulp layer, strong tiny impurities penetrability and good washing effect.



## Main technical data:

Model		EST27	EST4025	EST4525	EST5030	EST5530	EST6030
Filtrating area (m <sup>2</sup> )		35	40	45	50	55	60
Inlet consistency (%)		0.5-1					
Outlet consistency (%)		4-6					
Capacity (t/d)	Rice-wheat-straw pulp	35-52	40-60	45-67	50-75	55-82	60-90
	Mixed waste paper	52-70	60-80	67-90	75-100	82-110	90-120
	Reed pulp	70-88	80-100	90-112	100-125	110-137	120-150
	Chemical wood pulp	105-122	120-140	135-157	150-175	165-192	180-210
Motor power (kw)		15			18.5		22

● The capacity may be different according to different pulp variety and consistency.  
So the capacity in the above chart is only used for choosing the model.



## Screw press

### Application:

It is used for pulp dewatering and thickening.

### Design features:

- ◇The screw spindle distributes the compression ratio reasonably along axial direction, which ensures a high thickening efficiency.
- ◇There is internal dewatering unit with holes in the pulp- out side, which ensures the consistency of dewatering effect of inside and outside of the pulp layer.
- ◇Pneumatic thrust reverser ensures the stability of the outlet consistency and helps to adjust the outlet consistency.
- ◇Easy maintenance.



### Main technical data:

Model	EST12	EST13(A)	EST14(A)	EST15(A)	EST16(S)
Screw specification (mm)	Φ400	Φ450	Φ600	Φ700	Φ900
Inlet consistency (%)	10-14			8-12	
Outlet consistency (%)	25-35				
Capacity (t/d)	40-50	60-80	100-150	160-220	200-300
Motor power (kw)	30	37	55	110	160-220

●The capacity may be different according to different pulp variety and consistency.  
So the capacity in the above chart is only used for choosing the model.



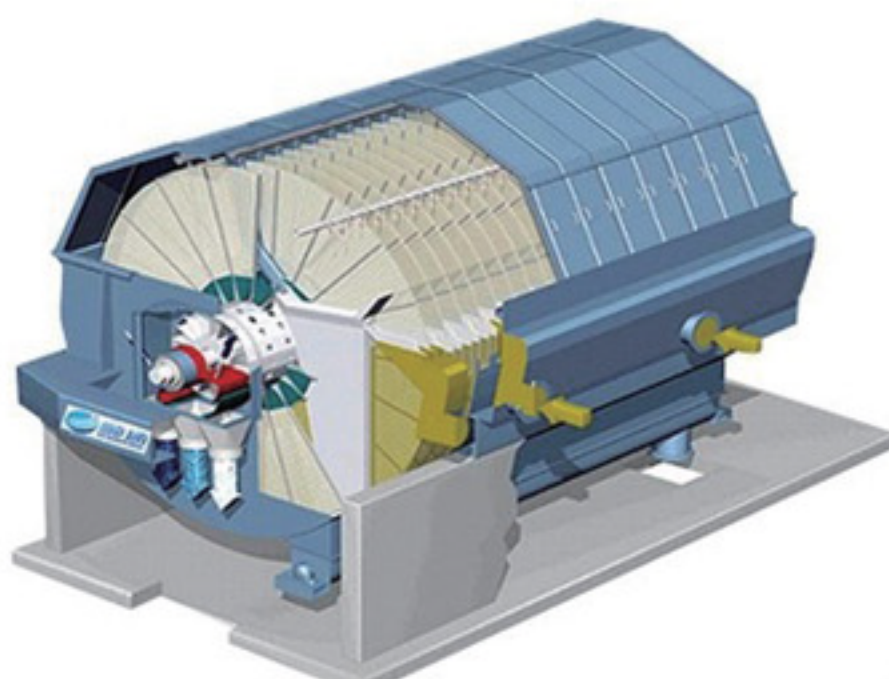
## Multi-disc filter

### Application:

By adopting the vacuum formed by the drop leg extraction, and also with the help of the filtration media, disc filter separates the solid and the filtrate and gets filtrates in different quality divided by the distribution valve. It is widely used for white water recycling and pulp thickening. When used as saveall, it recycles water and fibers; when used for thickening, it achieves high production rate with low fiber loss via unit machine. Outlet consistency can reach to 12%~14%.

### Design features:

- ◇ Disc with different structures and high strength, ensures larger effective filtering area. It is economical and easy to replace.
- ◇ All models and sizes are available. Filtering area can be modified upon capacity requirements.
- ◇ Distribution plates are made of special wear resistant material, which has good seal effect.



### Main technical data:

Model		EST37	EST45	EST52
Filter disc diameter (mm)		3700	4500	5200
Filter disc number		6-16	8-20	10-20
Single filter disc area (m <sup>2</sup> )		17	26	38
Main driving motor power (kw)		7.5-15	11-18.5	15-37
Inlet consistency (%)	OCC, Chemical wood pulp	0.5-1.2		
	Deinking stock, straw pulp	0.5-1.0		
	White water recovery	0.3-0.8		
Outlet consistency (%)	OCC, Chemical wood pulp	8-12		
	Deinking stock, straw pulp	8-12		
	White water recovery	3.5-4.5		
Capacity (m <sup>3</sup> /m <sup>2</sup> .h)	OCC, Chemical wood pulp	0.7-1.1		
	Deinking stock, straw pulp	0.5-0.7		
	White water recovery	1.6-3.8		

● The capacity may be different according to different pulp variety and consistency.  
So the capacity in the above chart is only used for choosing the model.



## Double wire double press squeezer

### Application:

It is used for washing and thickening mechanical pulp, chemical pulp and waste paper pulp, especially for heat dispersion system and pulp thickening in high consistency bleaching.

### Design features:

- ◇Variable frequency speed regulation.
- ◇Long pressure area, high thickening rate.
- ◇Wide pulp adaptability, less fiber loss.
- ◇Stable pulp consistency, steady working.



### Main technical data:

Model		EST1	EST2	EST3	EST4	EST5	EST6
Working width (mm)		1200	1600	2000	2400	2800	3200
Inlet consistency (%)		3.5–4.5					
Outlet consistency (%)		25–35					
Inlet pressure (mpa)		0.01–0.03					
Air source pressure (mpa)		0.6					
Washing water pressure (mpa)		0.6					
Power of main motor (kw)		18.5*2	22*2	22*2	30*2	37*2	45*2
Capacity (t/d)	OCC	70–80	90–110	120–140	150–170	180–200	200–230
	ONP	60–70	70–90	100–120	120–150	140–170	160–200

● The capacity may be different according to different pulp variety and consistency.  
So the capacity in the above chart is only used for choosing the model.



# Double cylinder squeezer

### Application:

It is used for concentrating all kinds of pulp.

### Design features:

- ◇ Inlet consistency 3%–5%, outlet consistency 28%–32%.
- ◇ Low power consumption: the power consumption is only a quarter of that of the single spiral squeezer.
- ◇ Easy repair and maintenance; easy to operate and control.



### Main technical data:

Model	EST1015	EST1020	EST1025	EST1320	EST1325	EST1330	EST1335
Cylinder size (mm)	Φ 1000*1500	Φ 1000*2000	Φ 1000*2500	Φ 1000*2500	Φ 1000*2500	Φ 1000*3000	Φ 1000*3500
Inlet consistency (%)	3%–5%						
Outlet consistency (%)	28%–32%						
Capacity (t/d)	90	120	150	160	200	250	300
Motor power (kw)	5.5	7.5	11	18.5	22	37	45
Pulp kind	ONP/ OCC/ WOOD PULP/						

● The capacity may be different according to different pulp variety and consistency.  
So the capacity in the above chart is only used for choosing the model.



## Disc heat-disperser

### Application:

It is used to disperse the impurities such as gooey, grease, paraffin, plastic, rubber or ink particles.

### Design features:

- ◇ Reasonable tooth plate structure makes sure efficient disperse for gooey and ink particles and so on.
- ◇ Automatic lubrication system makes sure the equipment run smoothly.
- ◇ Different tooth plate is configured according to different pulp type.

### Main technical data:

Model		EST1	EST2	EST3
Nominal diameter (mm)		Φ450	Φ710	Φ1050
Inlet consistency (%)		28-32		
Outlet consistency (%)	Low	4-12		
	High	25-30		
Treating temperature (°C)		110-120 (OCC)		
		80-90 (ONP)		
Capacity (t/d)		30-70	80-300	280-600
Main motor power (kw)		110-200	160-800	630-1250

● The capacity may be different according to different pulp variety and consistency.  
So the capacity in the above chart is only used for choosing the model.

## Disperser system







● Preheater



● Double cylinder squeezer



● Screw plunger



● Screw feeder



● Screw crusher



● Disc heat-disperser

### Main technical data:

Model	Inlet consistency (%)	Outlet consistency (%)	Operating temperature (°C)	Operation clearance (mm)	Feed accuracy (mm)	Capacity (t/d)	Motor power (kw)
EST710	4-10	4-30	90-120	0.1-0.5	0.01	70-300	185-560

● The capacity may be different according to different pulp variety and consistency.  
So the capacity in the above chart is only used for choosing the model.



## Ellipse floatation de-inker

### Application:

It is used for removing the dust and ink particles in the waste paper pulp, so as to get high quality paper pulp.

### Design features:

- ◇Self-priming can generate turbulence in different degree and bubbles in different size, more beneficial to remove ink particles and dust.
- ◇Wide range ink separation, less fiber loss.
- ◇All floatation cells use one liquid level control circuit, easy to operate.
- ◇Large throughput, small floor space.
- ◇Can be lay flat or stacked up.



### Main technical data:

Model		EST1	EST2
Specifications (mm)		3.8	3.8
Inlet consistency (%)		0.9-1.2	
Inlet pressure (mpa)		0.10	
Operational pressure difference (mpa)		0.09-0.10	
Capacity (t/d)	Single part length:1m	65-85	
	Single part length:2m	130-170	
	Single part length:3m	195-255	
	Single part length:4m	60-340	320-400
	Single part length:5m		400-500

●The capacity may be different according to different pulp variety and consistency.  
So the capacity in the above chart is only used for choosing the model.



## Closed multi-stage flotation cell

### Application:

It is used for removing the ink particles and ash in the waste paper pulp.

### Design features:

- ◇ Self-priming jet can generate multi-stage turbulence and get broad spectrum bubbles, remove the most out of ink particles and ash in different particle size.
- ◇ Totally-closed design, good operating environment.
- ◇ Multi-stage design, bubble density are higher, better ink removing effect.
- ◇ Low energy consumption.
- ◇ 3-5 stage flotation with one equipment, reduce floor space.



### Main technical data:

Model	EST1	EST2	EST3	EST4	EST5	EST6	EST7	EST8	EST9	EST10
Flow rate (m3/h)	256	400	512	624	800	976	1152	1344	1456	1600
layers	4-5									
Treating consistency (%)	0.9-1.1									
Capacity (t/d)	55-65	85-100	110-130	130-160	170-210	210-250	240-300	290-350	310-380	340-420
Consistency of ink (%)	2-3									

- The capacity may be different according to different pulp variety and consistency. So the capacity in the above chart is only used for choosing the model.



## Middle consistency bleaching tower

### Application:

It is used for pulp bleaching in the middle consistency bleaching section and mainly used for waste paper bleaching.

### Design features:

- ◇ It has special tower structure, which is beneficial for pulp going up and avoiding pulp detention.
- ◇ Baffle equipment is configured in the tower, which is beneficial for distributing pulp evenly.

### Main technical data:

Model	Specification(m3)	Bleaching temperature (°C)	Bleaching consistency (%)	Bleaching time(min)	Processing capacity (t/d)
EST31	15	60	8-12	20-30	40-60
EST32	25				80-120
EST33	45				120-180
EST34	60				200-280
EST38	100				260-350

## High consistency bleaching tower

### Application:

It is used for high consistency hydrogen peroxide bleaching of ground wood pulp or other pulps.

### Design features:

- ◇ The tower adopted cone structure to avoid bridging of pulp.
- ◇ Special designed inside structure to make sure constant pulp descending speed and same bleaching time.
- ◇ There is dilution function in the bottom of the equipment to realize high consistency bleaching and low consistency transportation.

### Main technical data:

Model	EST43	EST44	EST45	EST46
Nominal volume (m3)	50	70	100	130
Pulp consistency (%)	28-32			
Bleaching temperature (°C)	60-70			
Bleaching time (min)	60-90			
Production capacity (t/d)	50-80	80-120	120-170	170-220
Motor power (kw)	30*2	30*2	37*2	45*2

## Broke pulper

### Application:

It is used for breaking the broke that located at different parts under the paper machine.

### Design features:

- ◇ It is furnished with unique rotor, so the instant breaking ability is strong.
- ◇ We can design the equipment individually according to the paper machine and the customer's requirements.



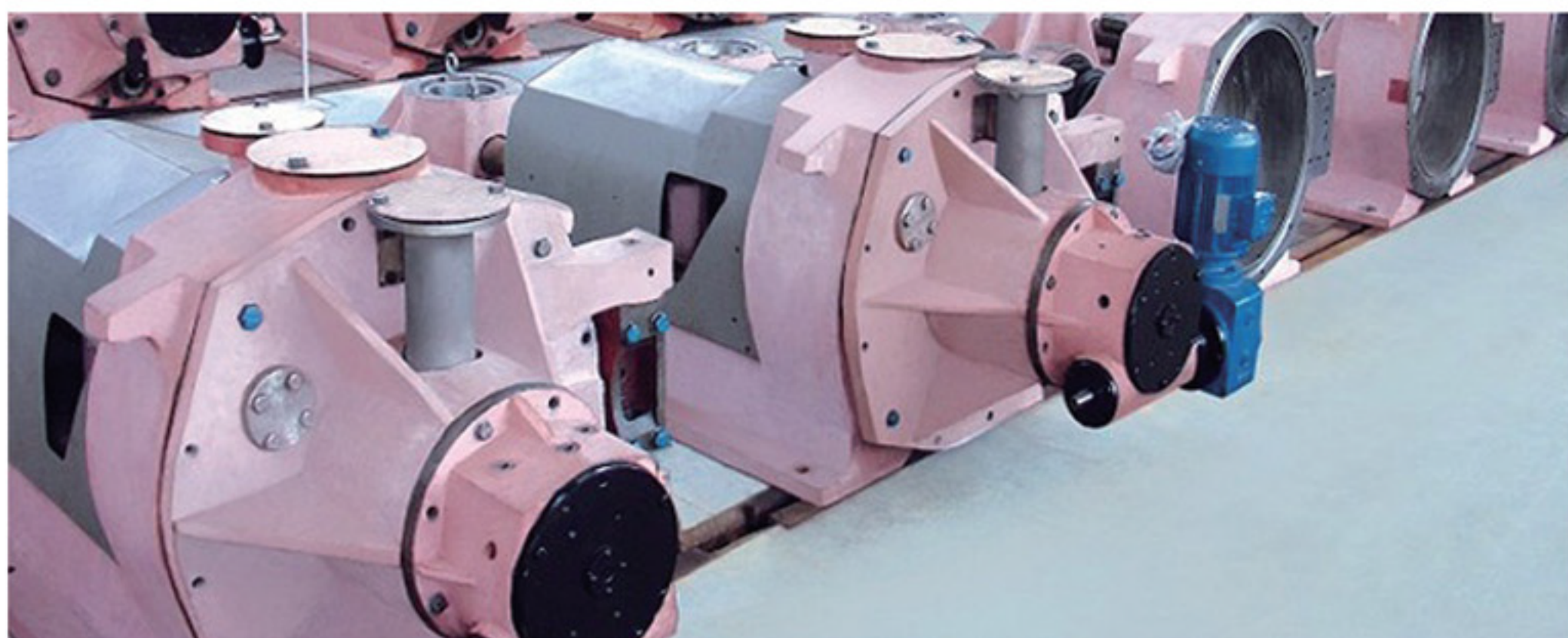
## DD Series Double Disc Refiner

### Application:

It is available for continuous beating of chemical wood pulp, mechanical pulp and waste paper pulp.

### Design features:

- ◇ It is manufactured with license of Metso, Finland.
- ◇ The equipment is furnished with automatic control system and can beat with constant power and constant energy consumption. The beating effect is stable.



### Main technical data:

Model	DD-450	DD-500	DD-550	DD-600	DD-660	DD-720	DD-900	DD-1100
Diameter of plate (mm)	Φ450	Φ500	Φ550	Φ600	Φ660	Φ720	Φ900	Φ1100
Capacity (t/d)	8-80	10-100	10-120	12-150	15-200	15-250	20-400	40-800
Power (kw)	90-160	132-200	160-250	185-315	220-500	250-800	315-1000	400-1800
Consistency (%)	3-5							

● The capacity may be different according to different pulp variety and consistency.  
So the capacity in the above chart is only used for choosing the model.



## ZM Series Conical Refiner

### Application:

The equipment is mainly used for coarse beating, refining and re-pulping of broke and waste paper. It is available for beating long fiber pulp such as cotton, wood and hemp.

### Design features:

◇ The equipment is furnished with automatic control system and can beat with constant power or constant energy consumption. The beating effect is stable.

### Main technical data:

Model	ZM-450	ZM-460	ZM-600	ZM-750
Diameter of big end of rotor (mm)	Φ450	Φ460	Φ600	Φ750
Capacity (t/d)	20-60	30-150	50-250	80-400
Power (kw)	110-132	160-315	355-500	450-900
Consistency (%)	3-5			

● The capacity may be different according to different pulp variety and consistency. So the capacity in the above chart is only used for choosing the model.





## Toothed Deflaker

### Application:

It is used for fiberizing broke pulp, waste paper pulp, etc.

### Main technical data:

Model	EST246	EST330	EST458
Diameter of rotor (mm)	Φ 246	Φ 330	Φ 458
Capacity (t/d)	10-30	15-60	15-120
Power (kw)	45-55	30-37	75-132
Consistency (%)	3-5		

## Stepped deflaker

### Application:

It is used for fiberizing pulp board, waste paper pulp, etc.

### Main technical data:

Model	EST450	EST475	EST500	EST525
Diameter of rotor (mm)	Φ 450	Φ 475	Φ 500	Φ 525
Capacity (t/d)	35-180	45-210	52-260	60-310
Power (kw)	160	200	250	315
Consistency (%)	3-5			

## Claflin refiner

### Application:

It is used for beating long fiber pulp such as cotton pulp, hemp pulp and wood pulp.

### Design features:

◇ The fiber-to-fiber bonding strength and evenness are improved. It is a good equipment to produce finer paper and high strength paper. The equipment is furnished with automatic control system and can beat with constant power and constant energy consumption. The beating effect is stable.



### Main technical data:

Model	Diameter of beg end of rotor (mm)	Capacity (t/d)	Power (kw)	Consistency (%)
EST-800	Φ 800	20-80	200-250	2-5



## High consistency refiner

### Application:

It is used for refining in high consistency. It is available for wood pulp, bulrush pulp, bagasse pulp, bamboo pulp and straw pulp. It is also used in SCMP, CTMP and APMP process.

### Design features:

◇The equipment is furnished with automatic control system, pressure lubrication system, hydraulic performing system, detecting and protecting system. The refining effect is good.



### Main technical data:

Model	EST600	EST900	EST1100	EST1320	EST1470
Diameter of plate (mm)	Φ 600	Φ 900	Φ 1100	Φ 1320	Φ 1470
Rotational speed (r/min)	1500				
Inlet consistency (%)	25-35				
Production capacity (t/d)	15-40	40-100	60-130	100-180	130-220
Motor power (kw)	220-400	355-1000	710-1400	1400-3000	2500-4000

● The capacity may be different according to different pulp variety and consistency. So the capacity in the above chart is only used for choosing the model.



## Wedge wire screen basket

The most proper wedge bar will be selected according to different raw material and different processing position in order to develop good performance, achieve optimized screening effect and meet customer's requirements.

### Design features:

Wedge bar material is SS316L after mechanical polishing. Good processing technology ensures fit precision of wedge bar and reinforce ring and make sure the evenness of the screen cut.

### Production scope:

- ◇ Deviation of slot width: within  $\pm 0.02\text{mm}$
- ◇ Chroming thickness:  $0.20\sim 0.30\text{mm}$
- ◇ Surface hardness:  $\geq \text{HRC}60\sim 66(\text{HV}700\sim 900)$
- ◇ Screen area:  $0.4\text{m}^2\sim 23\text{m}^2$



## Drilled screen basket

Various specifications and models products are precisely manufactured with features of good performance and wear well

### Design features:

- ◇ Cleaner pulp
- ◇ Higher processing capability
- ◇ Lower operating costs

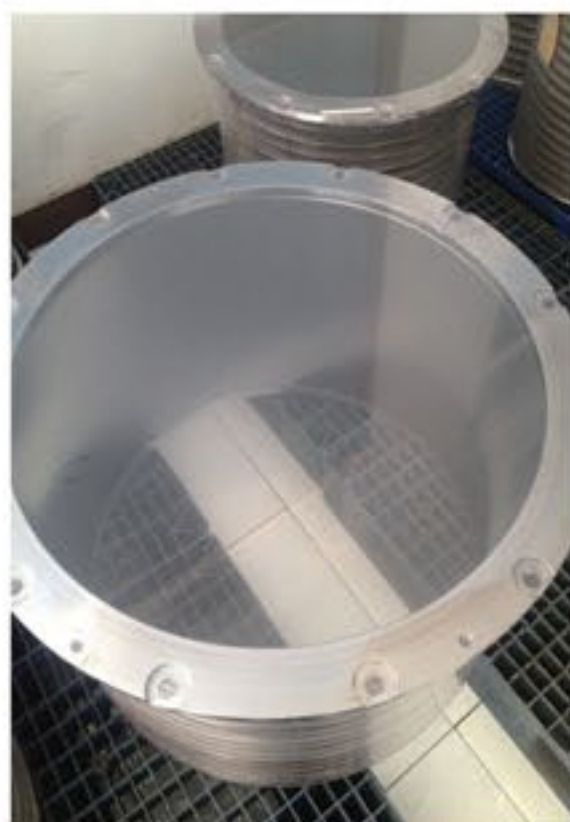
### Production scope:

- ◇ Hole size deviation:  $\pm 0.05\text{mm}$
- ◇ Chroming thickness:  $0.20\sim 0.30\text{mm}$
- ◇ Screen area:  $0.4\text{m}^2\sim 23\text{m}^2$





☆ Various screen basket





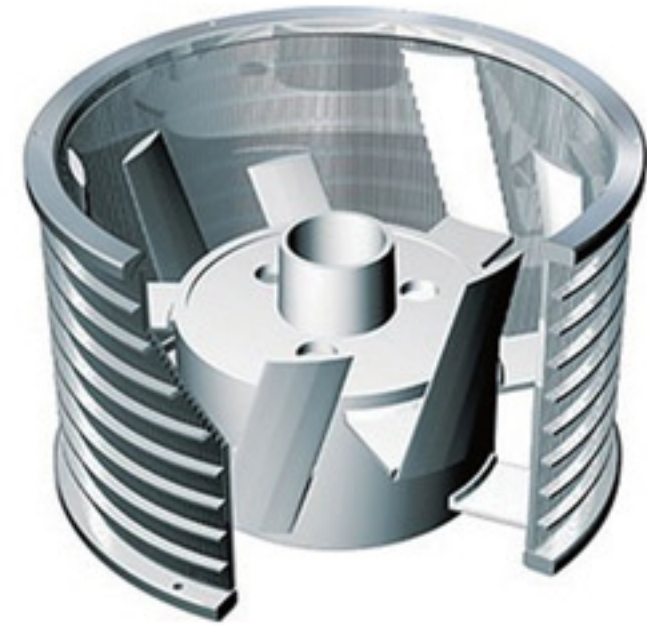
## Screen rotor

We will provide the most appropriate rotor according to customer's special request like different pulp, different consistency, different processing position etc. Also, we provide service of equipment upgrading.

### **The perfect combination of screen rotor and screen cylinder**

The combination of screen rotor and screen cylinder will determine and influence the running ability of the complete screen.

We will provide the most proper screen cylinder and screen rotor after accurately evaluating your screen system to reach the best running effect you want.





## D type hydropulper spare parts

**Size:** 10m<sup>3</sup>–70m<sup>3</sup>

**Design features:**

- ◇ New energy-saving rotor will strengthen the hydraulic action.
- ◇ Together with the new profiled screen plate, it will increase the fiber defibering efficiency and reduce energy cost.

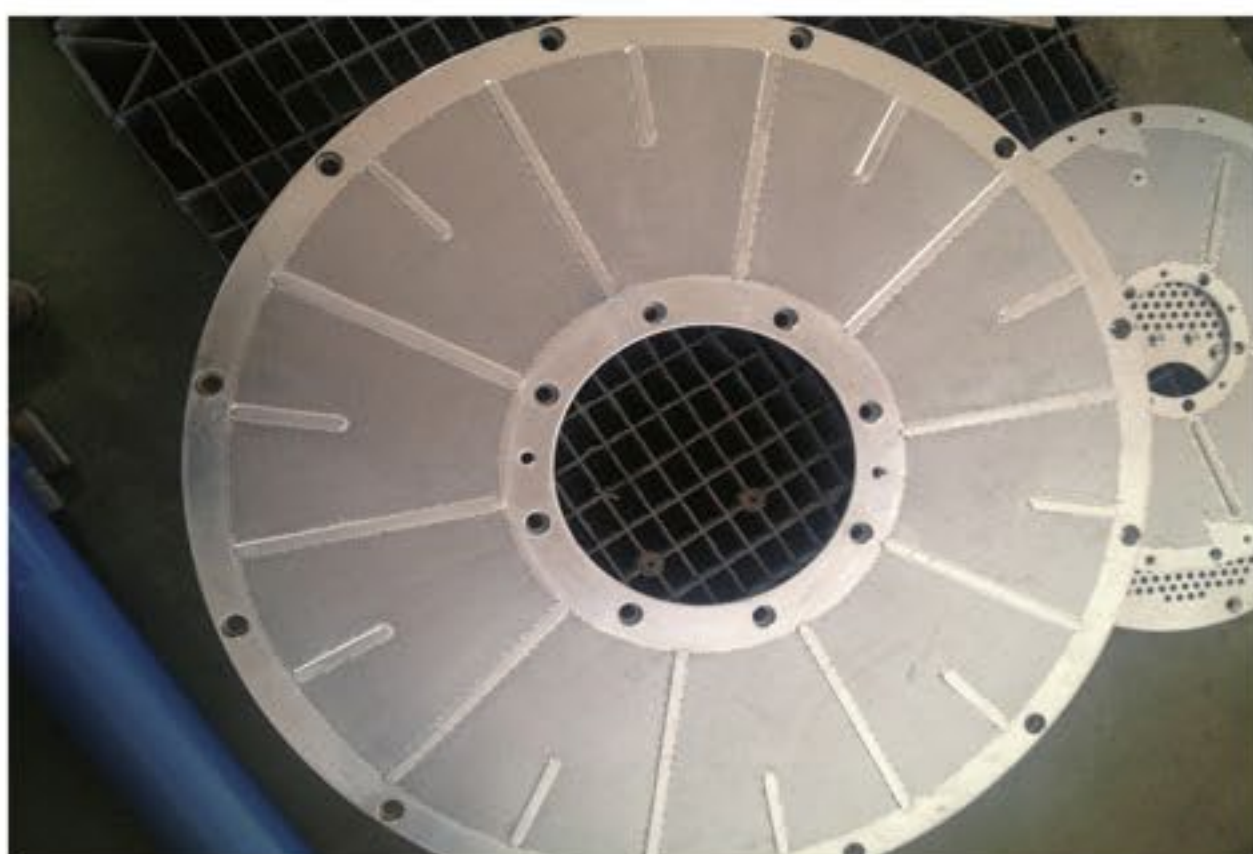


## Fiber separator spare parts

**Size:** Φ520mm~Φ 1250mm

**Design features:**

- ◇ The combination of new energy-saving impeller and special designed screen plate will save energy and reduce cost deeply.





## Custom design all kinds of screen plate



◆Screen plate exported to Indonesia (material: SMO254 or SS316L)

◆Hole diameter: 1.0mm or 1.2mm

## Cleaner cones

The most proper wedge bar will be selected according to different raw material and different processing position in order to develop good performance, achieve optimized screening effect and meet customer' s requirements.

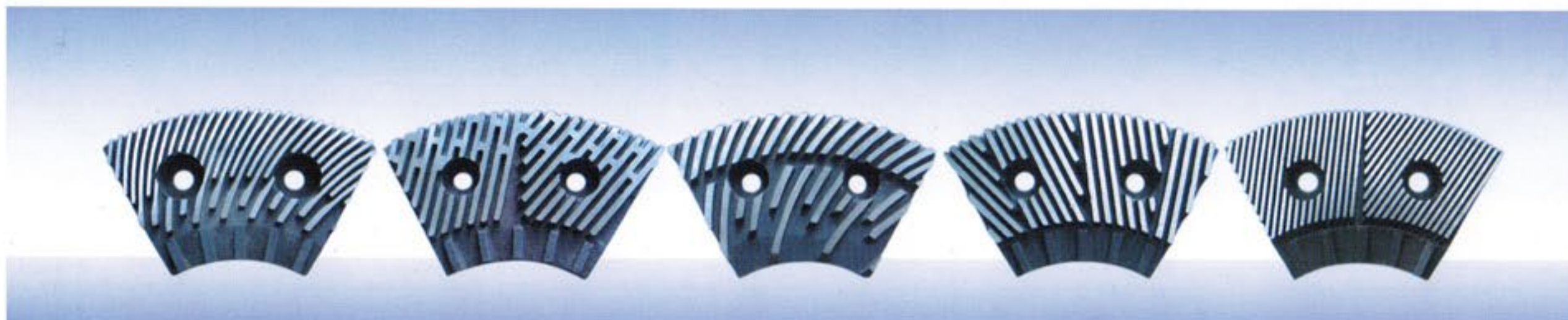
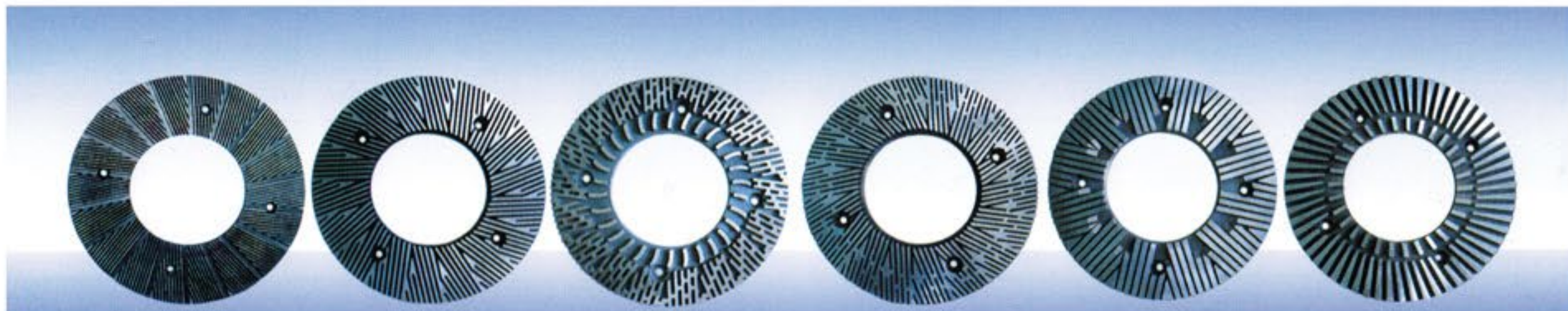
### Design features:

- ◇Different kinds
- ◇Best effect
- ◇High pulp remained rate
- ◇Many choice of flow rate
- ◇304/316L Stainless steel parts
- ◇Wear resistance, corrosion resistance, and impact resistance
- ◇Long service time
- ◇Ideal structure
- ◇Easy to disassemble

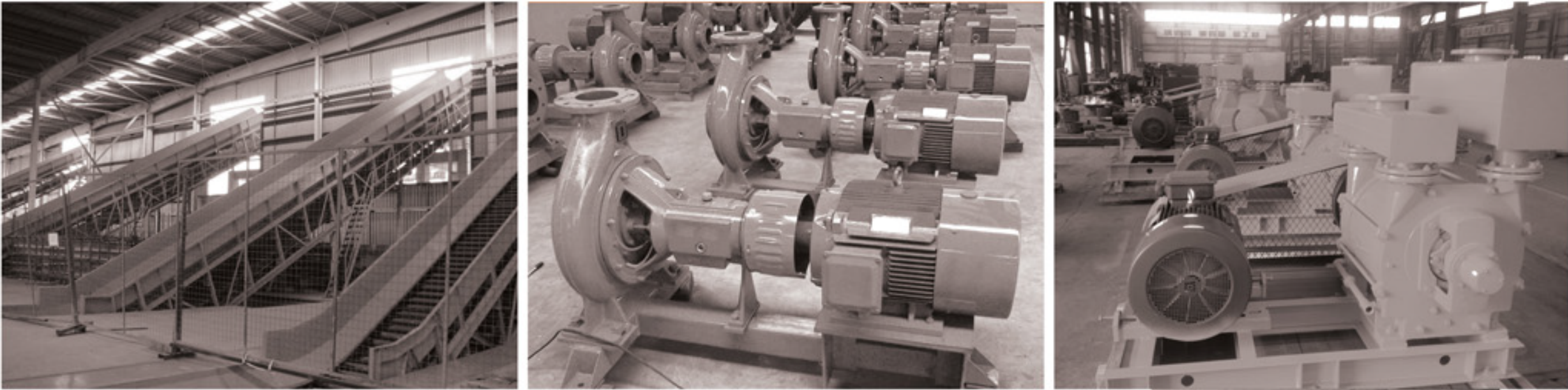




## Refiner disc, rotor and stator







## Stock preparation and paper making general equipments

---

- ★ Raw material conveying equipments
  - ★ Stock transportation and storage equipments
  - ★ Air compressor equipments
-



## Chain conveyor

### Application:

It is specialized for conveying bundled waste paper, loose waste paper and pulp board.

### Design features:

- ◇ Stamped heavy slab with high strength and impact resistance.
- ◇ Drivers are directly connected with main spindle gear reducer coupling, which makes the force of the whole machine more scientific.
- ◇ Chains are composed of heavy chains, heavy rollers, axis pin that can oil, heavy loading and high abrasion proof bush.
- ◇ Run on a pathway, steady and low friction, low consumption.
- ◇ Large conveying capability, operate steadily, low noise, easy to maintain.
- ◇ Conveying length and height can be different according to customer's requirements.



### Main technical data:

Model	EST800	EST1000	EST1200	EST1400	EST1600	EST1800	EST2000	EST2400
Width of conveyor (mm)	800	1000	1200	1400	1600	1800	2000	2400
Conveying capacity (m³/h)	35-120	50-165	65-210	80-225	95-300	110-345	135-380	155-420
Conveying speed (m/s)	0.02-0.2							
Conveying angle	0° -30°							
Conveying length (m)	5-100							
Materials conveyed with maximum width (mm)	35-120	50-165	65-210	80-225	95-300	110-345	135-380	155-420



## Bin discharging mobile screw conveyor

### Application:

It is used for long bin discharging, mainly used for wood chips bin or bamboo chips bin.

### Design features:

- ◇ It can discharge materials continuously and without dead corner. Also, it has large conveying capability.
- ◇ Conveying screws adopted variable diameter and pitch structure, materials in above 7 meters high can be discharged easily.
- ◇ Place gear and rack on both ends of the long axis, more steadily while working.
- ◇ Mobile long axis placed in conveying screw hollow axle, structure is more compact.



### Main technical data:

Model	EST70	EST55	EST40
Conveying capacity (m <sup>3</sup> /h)	200–250	100–150	40–100
Applicable bin volume (m <sup>3</sup> )	500–1000	300–600	100–300

## Corrugated sidewall steeply inclined belt conveyor

### Design features:

- ◇ Different gradient can be designed according different site conditions, the maximum gradient can be 90°.
- ◇ It has compact structure, less construction area and large conveying capacity. Besides, bulk material does not easy to fallout.





## Belt conveyor

### Application:

It is widely used in mining, metallurgy industry to transport both of bulk materials and end products.

### Design features:

- ◇ Large conveying capability, simple structure, standardized parts, easy maintenance.
- ◇ It can work with a unit set or work with other belt conveyor or other conveying equipment.



### Main technical data:

Kind of carrier roller	Belt speed (m/s)	Belt width					
		500	650	800	1000	1200	1400
		Conveying capability(t/s)					
troughed rollers	0.8	78	131				
	1.0	97	164	278	435	655	891
	1.25	122	206	348	544	849	1115
	1.6	156	264	445	696	1048	1427
	2.0	191	323	546	853	11284	1748
	2.5	232	391	661	1033	1556	2118
	3.15			824	1233	1858	2528
	4.0					2202	2996
Parallel rollers	0.8	14	67	118			
	1.0	52	88	147	230	345	460
	1.25	66	110	184	288	432	588
	1.6	84	142	236	368	553	753
	2.0	103	174	289	451	677	922
	2.5	125	211	350	546	821	111



## DS Series pulp pump

### Application:

It is used for transporting pulp, sugar, starch and chemical material.

### Design features:

- ◇ Adopt the technology of ANDRITZ.
- ◇ High efficiency.
- ◇ Anti-jammed.
- ◇ Non-leakage and easy maintenance.



### Main technical data:

Flow (m <sup>3</sup> /h)	13-2500
Head (m)	7-110
Power (kw)	0.75-280
Rotation speed (r/min)	750-3000
Connection diameter (mm)	Φ 80-600
Pulp consistency (%)	≤ 6
Working pressure (Mpa)	≤ 1.6



## DSP Series hi-efficiency technical pulp pump

### Application:

It is suitable for transporting pulp, cotton pulp and sewage water with fiber.

### Design features:

- ◇ Adopt the technology of ANDRITZ.
- ◇ Single-stage and single suction.
- ◇ Semi-opened impeller.
- ◇ It has auxiliary impeller seal and impeller clearance adjustment plate.
- ◇ High efficiency.
- ◇ save energy.



### Main technical data:

Flow (m <sup>3</sup> /h)	13-2000
Head (m)	6-55
Power (kw)	1.1-250
Rotation speed (r/min)	980-1480
Connection diameter (mm)	50-350
Pulp consistency (%)	≤ 5
Working pressure (mpa)	≤ 1.0



# DWP Series Single-suction low pulse pump

## Application:

It is suitable for the pulp-feed system of high or middle speed, and is also good for upgrading of old paper machine.

## Design features:

- ◇ Adopt the technology of ANDRITZ.
- ◇ Single-stage and single suction.
- ◇ Combination of both semi-opened and closed impeller.
- ◇ It has auxiliary impeller seal and Impeller clearance adjustment plate.



## Main technical data:

Flow (m <sup>3</sup> /h)	55–1920
Head (m)	4–50
Power (kw)	3–250
Rotation speed (r/min)	980–1480
Connection diameter (mm)	Φ 100–350
Pulp consistency (%)	≤ 1.5
Working pressure (mpa)	≤ 1.0



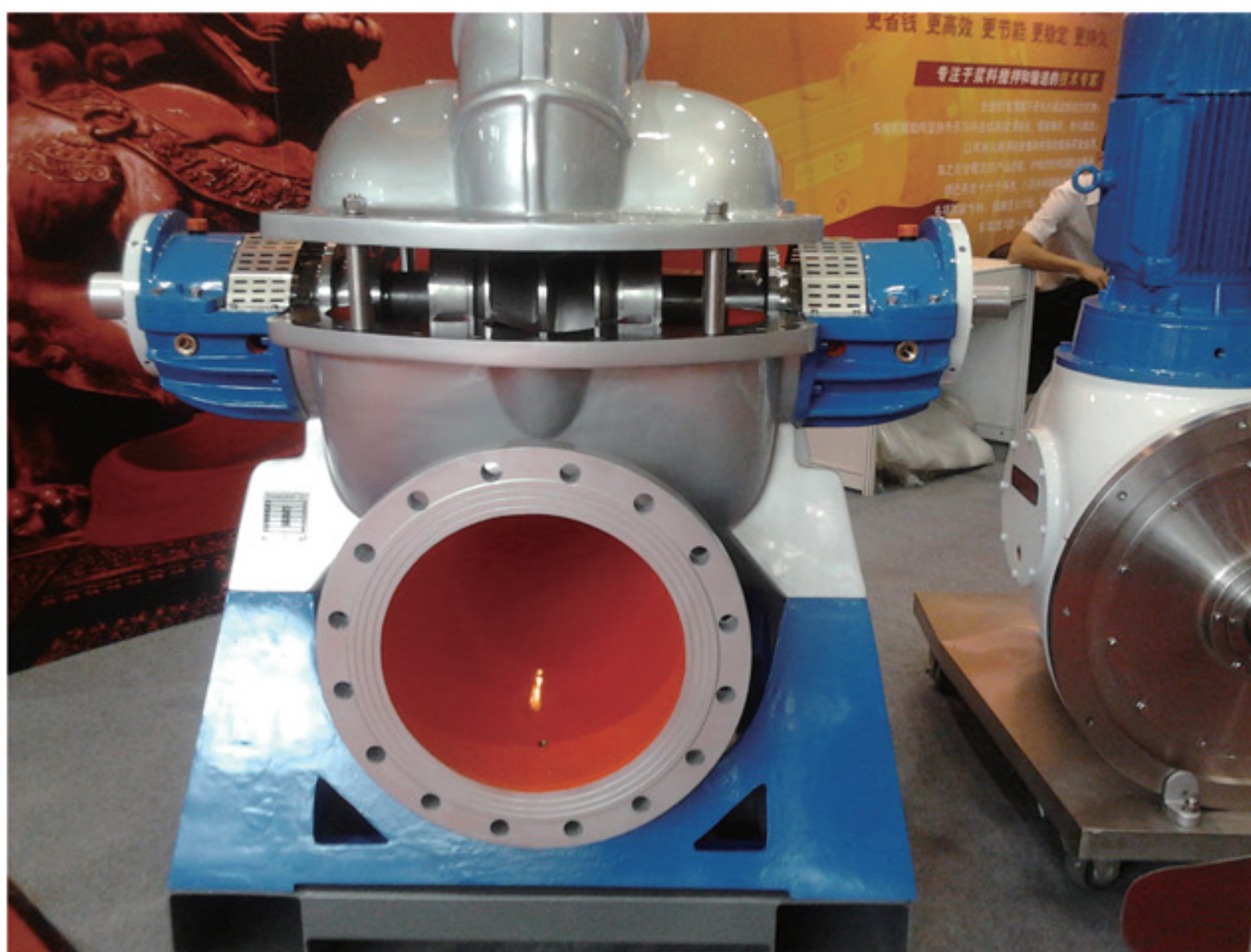
## DSWB Series double-suction low pulse pump

### Application:

It is suitable for the pulp-feed system of high or middle speed.

### Design features:

- ◇ Adopt the technology of ANDRITZ.
- ◇ Big twist vanes and stagger outlet intercalation helps to decrease the flow impulsion and depress the flow pulse efficiently.
- ◇ Horizontal type, easy to install.
- ◇ Special seal.
- ◇ Non-leakage.



### Main technical data:

Flow (m <sup>3</sup> /h)	300-2600
Head (m)	9-85
Power (kw)	45-355
Rotation speed (r/min)	980-1480
Connection diameter (mm)	Φ 200-350
Pulp consistency (%)	≤ 1.5
Working pressure (mpa)	≤ 1.0



## DTJ Series adjustment safety agitator

### Application:

It can be used in the pulp pool, pulp tower, mixed pool, dry pool as well as front pulp pool in the paper-making process.

### Design features:

- ◇ Adopt the technology of ANDRITZ.
- ◇ The vane can be rotating adjusted by bolts.
- ◇ The seal adopts rubber ones with metal framework embedded in it.



### Main technical data:

Pulp tower volume (m <sup>3</sup> )	10-1200
Power (kw)	3-75
Rotation speed (r/min)	150-320
Pulp consistency (%)	≤4.5
Impeller diameter (mm)	Φ 300-1800



## 2BE Series water ring vacuum pump

### Main technical data:

Model	Suction pressure (hpa)	pump revolution speed (r/min)	Maximum volume of working gas (m3/min)	Motor power (kw)	Type of belt drive	Motor voltage(v)	Inhalation caliber (mm)	Discharge caliber (mm)
2BE1 202	33	790	9.5	18.5	Belt	380	125	125
		880	11	18.5	Belt			
		980	12	22	Coupling			
		1100	14	30	Belt			
		1170	15	30	Belt			
2BE1203	33	790	14	30	Belt	380	125	125
		880	16	30	Belt			
		980	18	37	Coupling			
		1100	20	45	Belt			
		1170	21	45	Belt			
2BE1 252	33	558	20	30	Belt	380	150	150
		660	25	37	Belt			
		740	28	45	Coupling			
		820	30	55	Belt			
		880	33	75	Belt			
2BE1 253	33	560	28	45	Belt	380	150	150
		590	30	55	Belt			
		660	35	55	Belt			
		740	39	75	Coupling			
		820	43	90	Belt			
2BE1 303	33	466	43	55	Belt	380	200	200
		520	45	75	Belt			
		590	52	75	Coupling			
		660	58	90	Belt			
		740	62	110	Coupling			
2BE1 400	160	300	68	75	Coupling or belt	380	300	300
		323	80	90				
		367	85	110				
		393	92	110				
		449	110	132				
2BE1500	160	242	125	160	Coupling		380	350
		266	145	185			380	
		294	165	200			6000	
		336	190	250			6000	
		372	210	280			6000	
2BE1 600	160	200	180	185	Coupling		380	400
		236	210	250			6000	
		266	240	280			6000	
		294	260	315			6000	
		336	285	350			6000	



### Vacuum pump



### Air compressor

Key parts of the air compressor are manufactured in the CNC machine center. Monomer type valve block, slow speed of revolution, high compression efficiency, and easy maintenance. Crankcase, air cylinder and cylinder cover all use best cast iron, angular, strong and durable, high cost performance.



## Belt press filter

### Application:

It is a kind of dehydration equipment. As a matching equipment of sewage disposal, it can dehydrate the suspended substance and sediment after air-flow processing, and press them into mud cake, so as to prevent the second pollution. It can also used for concentrating the pulp, extracting the black liquor and other fabrication processing.



### Design features:

- ◇ Large production capability.
- ◇ High dehydration rate.
- ◇ Long service time.



# Shallow layer air floatation machine

### Application:

Compared with the traditional air floatation machine, the new type high efficiency shallow layer air floatation machine changes water static in-dynamic out into dynamic in-static out. The suspensions vertically float on the surface of the water and the sewage only to stay in the purifying pond about 2-3min, the processing efficiency is extremely high.



# Cavitation air flotation machine

It is the latest product developed by the introduced technology from the United States. It is widely used for sewage treatment in the industries of papermaking, chemical, printing and dyeing, oil refining, starch and foodstuff.







## Paper making equipments

---

- ★ Tissue paper machine
- ★ Writing printing paper machine
- ★ Packaging paper machine
- ★ Newsprint paper machine
- ★ Special paper machine



# Tissue paper machine

## Main technical data:

Paper grade	Tissue, napkin, hand tower, daily used paper
Type of paper machine	Vacuum cylinder mould high speed tissue machine, crescent former high speed tissue machine
Trim width (mm)	1575-5600
Working speed (m/min)	180-1600
Capacity (t/d)	20-60







## Newsprint paper machine

### Main technical data:

Paper gade	newspaper
Type of paper machine	Long wire multi-cylinder paper machine
Trim width (mm)	2362-3950
Working speed (m/min)	300-800
Capacity (t/d)	50-220



# Writing printing paper machine

## Main technical data:

Paper grade	Writing printing paper
Type of paper machine	Fourdrinier multi-cylinder paper machine
Trim width (mm)	1575–6000
Working speed (m/min)	120–1000
Capacity (t/d)	50–250





## Packing paper machine

### Main technical data:

Paper grade	Fluting, white board paper, kraft board paper, ivory board paper
Type of paper machine	Mould machine, fourdrinier machine, overlapped machine
Trim width (mm)	1575-6000
Working speed (m/min)	80-600
Capacity (t/d)	100-950





# Special paper machine

### Main technical data:

Paper grade	All kinds of special paper
Type of paper machine	Inclined wire special paper machine; Fourdrinier multi – dryer special paper machine
Trim width (mm)	1092–2640
Working speed (m/min)	350–400
Capacity (t/d)	10–80





## Air-cushion headbox

Headbox is used for sizing in fourdrinier section of paper making machine for producing cardboard paper, corrugated base paper, writing and printing paper, offset paper and so on.





# Former

### Application:

It works together with the piece type cylinder mould to produce paperboard of low, medium and high grade.

### Design features:

- ◇ Square taper multi-barreled pressure pulp distribution.
- ◇ Diffusion separation chamber for rectification and pulp evenness.
- ◇ Adjustable mechanism for pulp serving on the wire to control the quality of the wet paper page.
- ◇ Paper production speed increase by 25%–40%.
- ◇ Increase the evenness, flatness and quantification of the paper.
- ◇ Increase the variety and weight range of the paper.
- ◇ Simplified structure, easy maintenance.
- ◇ Low energy consumption.

### Main technical data:

Paper variety	High strength corrugated paper
Sizing grammage (g/m <sup>2</sup> )	25–100
Speed (m/min)	80–200
Width	1092–4200





# Cylinder mould

## Type:

Paper-making cylinder mould, dewatering cylinder mould for thickener and former.

## Structure:

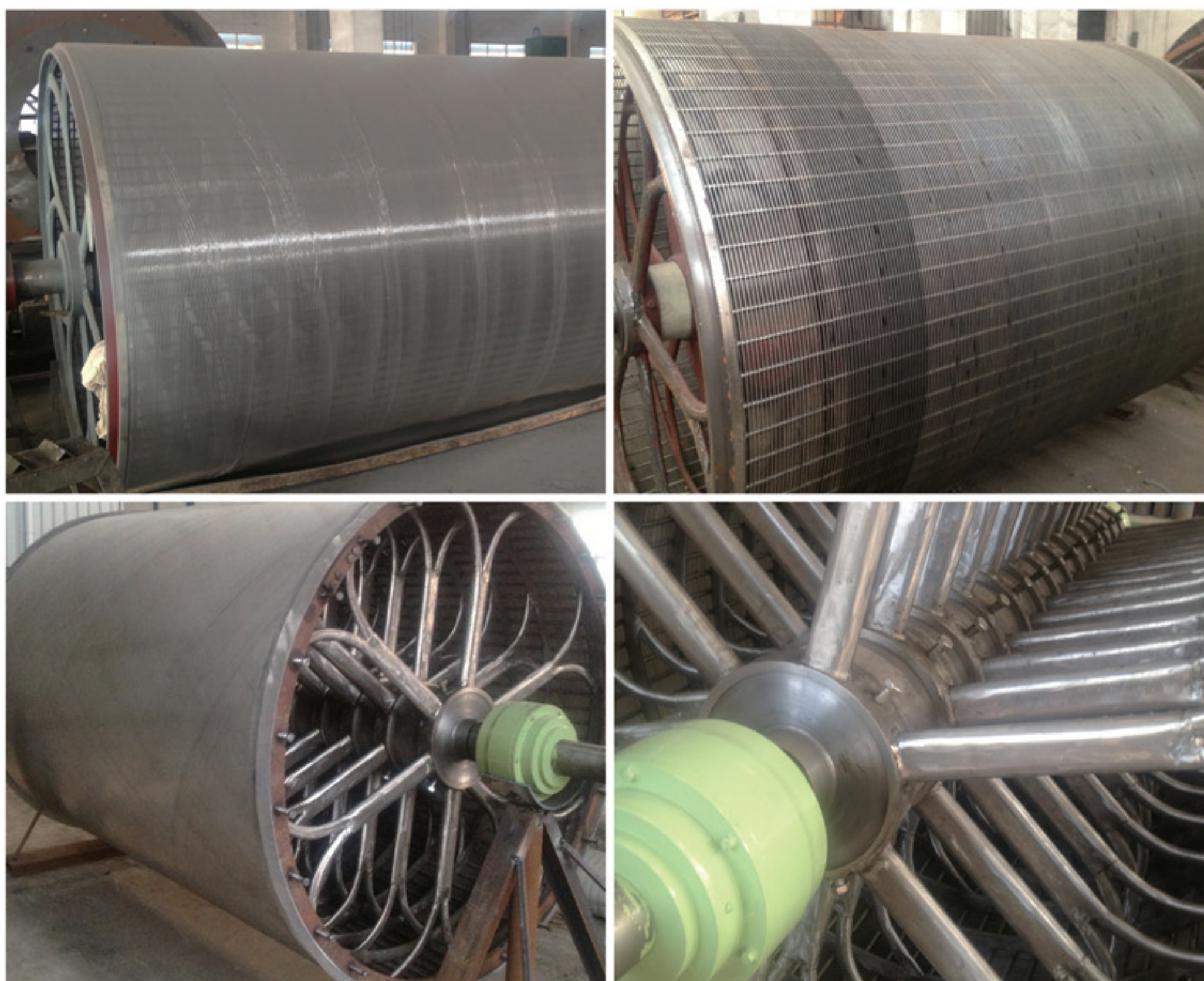
Welding sheet-rounded, perforated sheet with rods, gravity type.

## Main technical data:

Φ 1000	Width in 1000-8000mm
Φ 1250	
Φ 1500	
Φ 2000	
Φ 2500	dewatering cylinder mould for thickener
Φ 3000	







## Dewatering elements

- ◇ Forming board box
- ◇ Dewatering box
- ◇ Ultra-low vacuum suction box
- ◇ Low vacuum suction box
- ◇ Vacuum suction box
- ◇ Felt suction box
- ◇ Press shoe



## ※Cylinder mould/ dewatering elements





## Papermaking rolls

SECTION	NAME	CHARACTERISTICS
Forming section	Couch roll	Effective dewatering effect, corrosion resistance
	Vacuum couch roll	Φ500mm–Φ1500mm, width 2000mm–8000mm, thickness 30mm–120mm, hole diameter Φ3mm–Φ13mm
	Guide roll	High temperature, corrosion, tension, pressure and impact resistance, easy to scrape.
	Forward roll	Used in the rugged environment of driving unit, good frictional behavior and wear resistance.
Press section	Suction press roll (SS shell)	The glue layer has good toughness, large tapping area (max: 50%); special designed buffer layer can disperse stress and resist impact; well dewatering effect; high quality paper product; prolong the service time of felt.
	Suction press roll (copper shell)	Stable hole pattern, excellent dewatering effect, stable hardness after long service time, wear resistance and corrosion resistance.
	Soft top press roll	It has superior characteristic of releasing paper; wear, corrosion and impact resistance
	Hard top press roll	It has superior characteristic of releasing paper; stable hardness under high temperature; good bearing capacity under the operation of vapor spray, chemicals, high pressure and scraper operation.
	Grooved roll	Excellent wear resistance, dewatering performance
	Blind press roll	Liner pressure can reach 380KN/m; the surface of the coated area has 21%–23% tapping; the speed is about 1000m/min; special bonding system ensures the safe operation under high speed and high linear pressure; good wear resistance, effective dehydration
	Plain press roll	Good wear resistance
	Artificial stone roll	Good paper releasing; wear resistance; scraper can be used; can satisfy severe rugged environment under high linear pressure
	Guide roll	Good paper releasing; wear resistance
	Spreader roll	Good wear resistance and frictional behavior
	Pick up roll	Good paper releasing, anti-adhesive capacity; wear resistance
Drying section	Hard breaker stack roll	Super wear and high temperature resistance; uniform surface
	Soft breaker stack roll	Super wear and high temperature resistance; good after-hardening resistance
Sizing/ coating section	Coating roll	Super wear resistance; good reinstatement and tread forming resistance; uniform surface; good wettability; high temperature and corrosion resistance; longer operational period; reduce downtime
	Sizing roll	High temperature, wear, corrosion, thread forming resistance; good reinstatement; uniform and stable size; longer run operational period.
Calender section	Calender roll	The use of nano material improves the performance of rubber significantly. Meanwhile, improves its elastic modulus and its impact resistance. It can keep safe performance although in severe rugged environment of high speed, high temperature, and high linear pressure. At the same time, roller surface lasts stability, good abrasion resistance, and a long grinding cycle.
Reeling part	Spool	Good wear and tear resistance





◆ Guide roll ( 1 )



◆ Guide roll ( 2 )



◆ Couch roll



◆ Forward roll



◆ Stonite roll



◆ Vacuum roll





◆ Plain press roll



◆ Grooved press roll



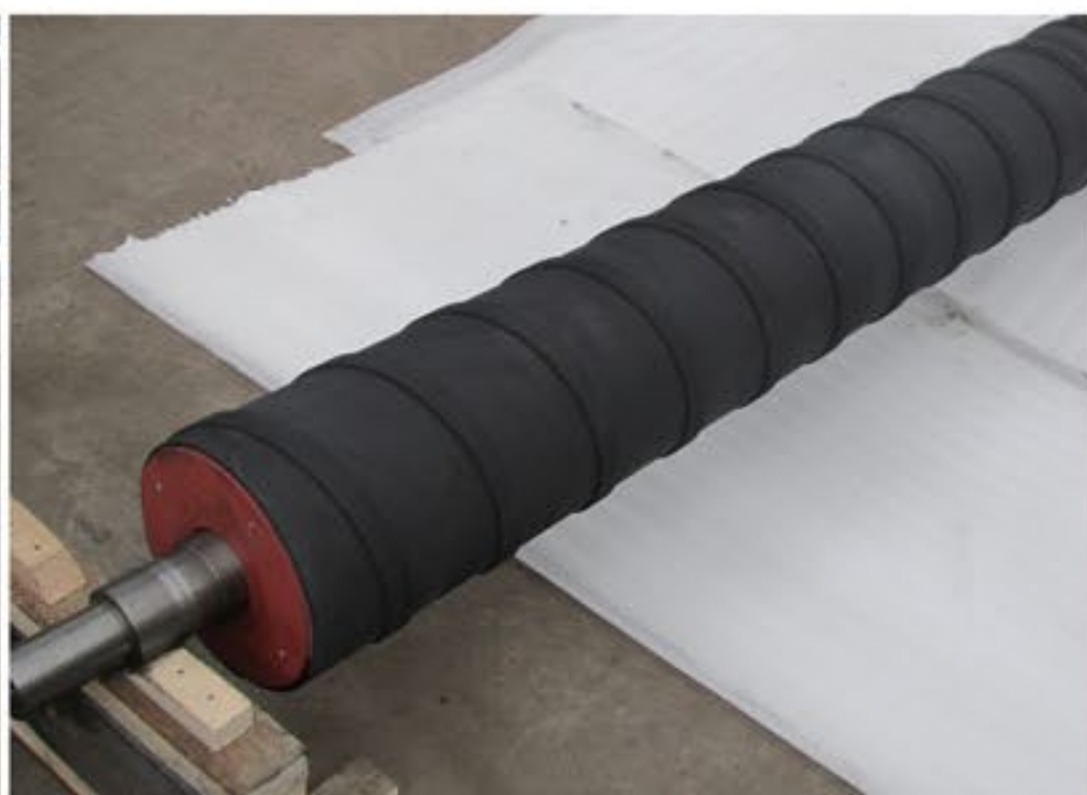
◆ Blind press roll



◆ Jumbo press roll



◆ Felt roll



◆ Spreader roll





◆ Calender roll(1)



◆ Calender roll(2)



◆ Spool roll(1)



◆ Spool roll(2)



◆ Reeling cylinder



◆ Bow roll



# Dryer cylinder and accessories

## Product inspection standards:

1. Dryer cylinder design standards can achieve the American national standards (ANSI), European standards (EN), Germany standard (DIN), France standard (NF), Britain standard (BS), Japan industrial standard (JIS), Russia standard (POCT), China national standard (GB) and some other countries' standards.
2. Dryer cylinder manufacturing, testing and acceptance standards: European 《PED 97/23 CE of European Union pressure equipment standard》 and (ASTM) standards and some other related standards.
3. Dryer cylinder supervision and inspection departments and standards: supervised and inspected by a third party of other international SGS recognized authorities according to the standard stipulated in the contract.

## Main technical data:

Diameter (mm)	Design pressure (mpa)	Material	Hardness (hb)	Width (mm)	Thickness (mm)	Surface finish	Working speed (m/min)
< Φ 1500	0.3-0.5	HT200-250	190-240	1350-10000	18-27	0.2-0.4	200-1300
Φ 1500	0.3-0.8	HT250-300		1350-10000	25-32		
Φ 1800	0.3-0.8	HT250-300		1350-10000	28-36		
Φ 2000	0.3-0.8	HT250-300		1350-8000	30-40		
Φ 2500	0.3-0.8	HT250-300		1350-8000	32-47		
Φ 3000	0.3-0.8	HT250-300		1350-8000	37-56		
Φ 3660	0.3-0.8	HT250-300		1350-6000	40-65		
Φ 3680	0.3-0.8	HT250-300		1350-5000	Negotiation		



◆ Dryer cylinder



## ※Dryer cylinder and accessories



◆ Yankee dryer



◆ Steel-sheet welded dryer

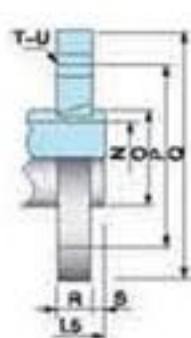
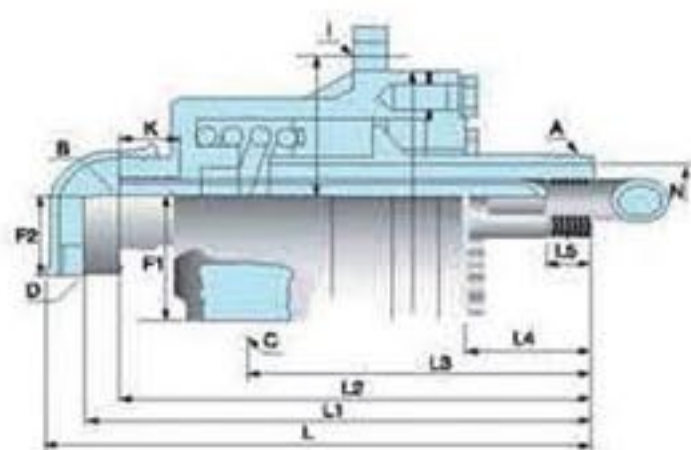




◆ Bearing pedestal



◆ Gear and pinion



◆ Rotary joint

## Other accessories for paper-making





## ※ Other accessories for paper-making



◆ Doctor



◆ Blade





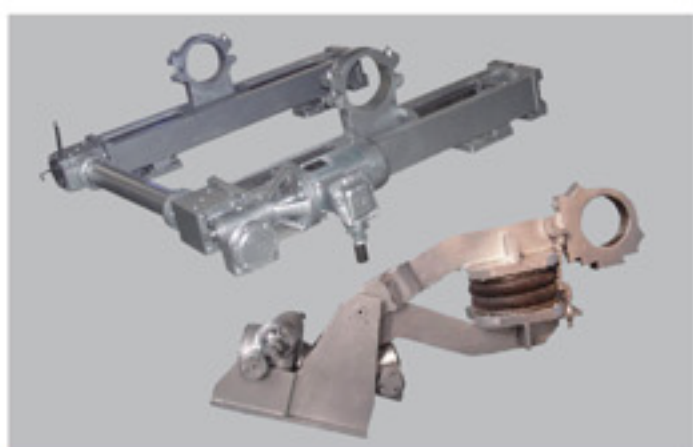
◆ Guider(1)



◆ Guider(2)



◆ Pneumatic tyre



◆ Stretcher



◆ Washer



◆ Shower



◆ Coupling (1)



◆ Coupling (2)



◆ Radiator



◆ Sheehan rope carrier system(1)



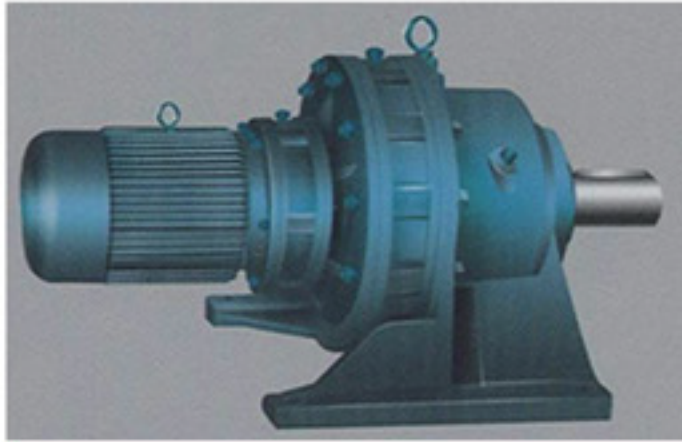
(2)



(3)



## ※Other accessories for paper-making



◆ Gear reducer(1)



◆ Gear reducer(2)



◆ Gear reducer(3)

### Test equipment



◆ Strength tester



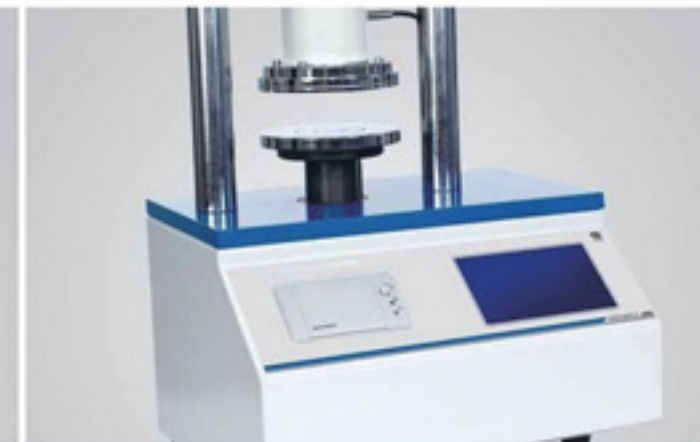
◆ Carton box pressure testing machine



◆ Tensile testing machine



◆ Ashcroft tester



◆ Compression equipment



◆ Pulp consistency sensor

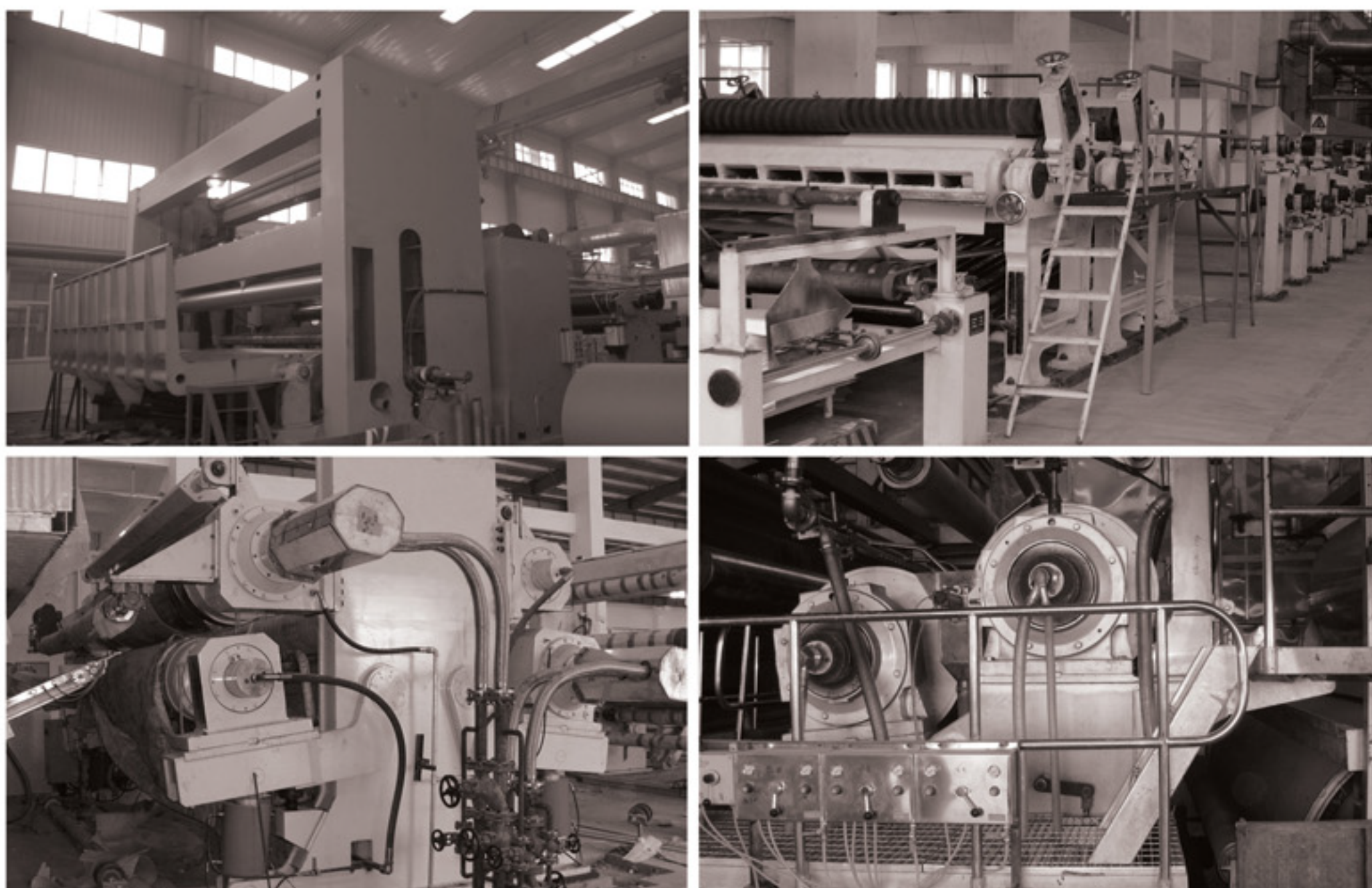


◆ The paper quantitatively stabilization system



◆ Pulp quantitative distribution system





## Finishing equipments

---

- ★ Rewinder
  - ★ Sheet cutter
  - ★ Calender
  - ★ Size press
-



## High speed bottom-feeding rewinder







**Main technical data:**

Trim width (mm)	2400	2640	2850	3200	3400	3600	3800	4000	4200	4400	4600	4800	5000	5200	5400	5600	5800	6000
Gauge (mm)	3500	3750	3950	4350	4550	4755	4955	5155	5355	5550	5750	5950	6150	6350	6550	6750	6950	7150
Working speed (m/min)	800-2000																	
Max base paper diameter (mm)	1600-3000																	
Max finished product diameter (mm)	1000-2000																	
Driving Method	DC variable-speed motor driving/ variable frequency variable-speed motor driving																	
Braking method	DC motor braking/ Variable frequency motor braking																	



## Frame type up-feeding rewinder



### Main technical data:

Trim width (mm)	1092	1575	1760	1880	2100	2400	2640	2850	3200	3400	3600	3800	4000	4200	4400	4600	4800	5000	5200	5400	5600
Gauge (mm)	2000	2400	2600	2700	3000	3200	3500	3700	4100	4300	4500	4700	5280	5480	5680	5880	6080	6280	6480	6680	6880
Working speed (m/min)	600																				
Max base paper diameter (mm)	1200-2200																				
Max finished product diameter (mm)	1000-1500																				
Driving Method	electromagnetic variable-speed motor driving/ variable frequency variable-speed motor driving																				
Braking method	DC motor braking/ Variable frequency motor braking																				



## Single/duplex sheet cutter



### Main technical data:

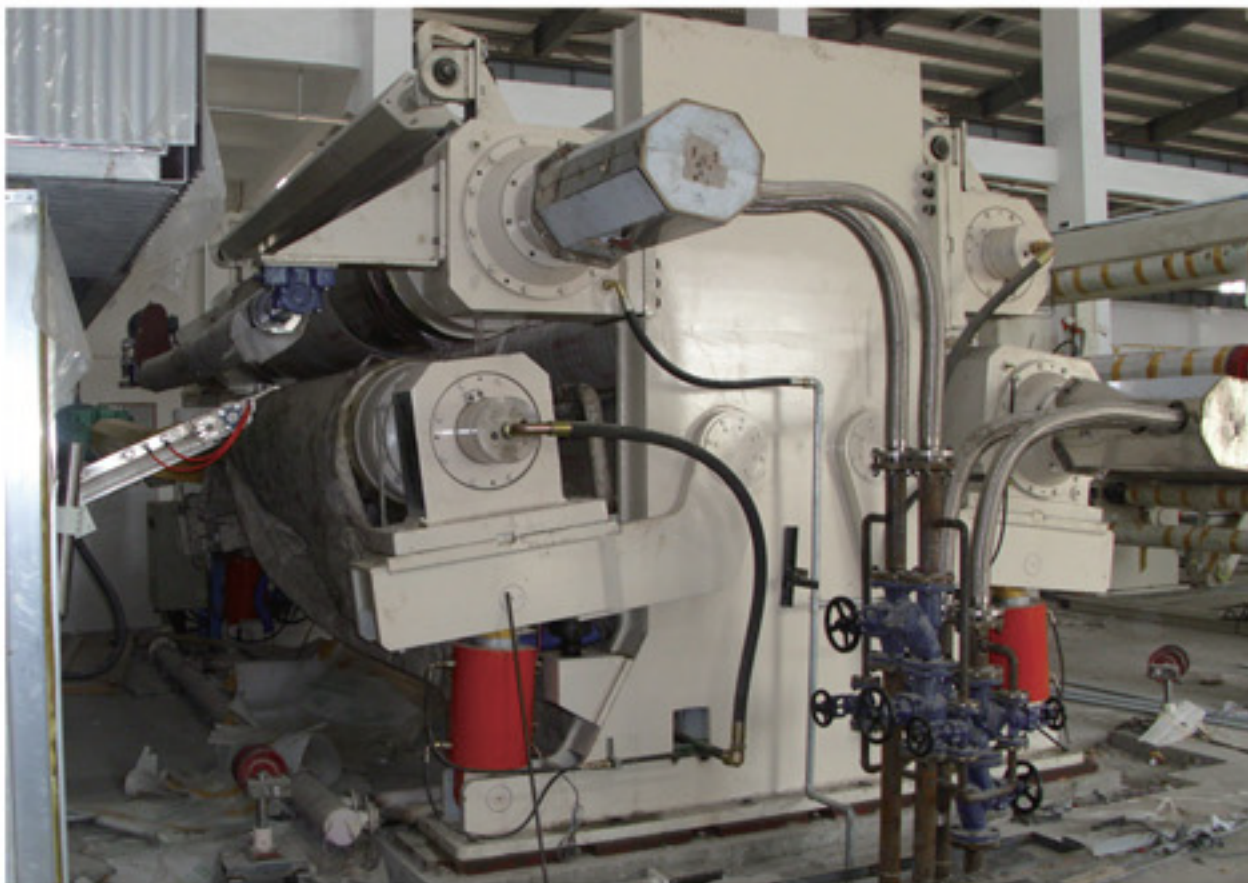
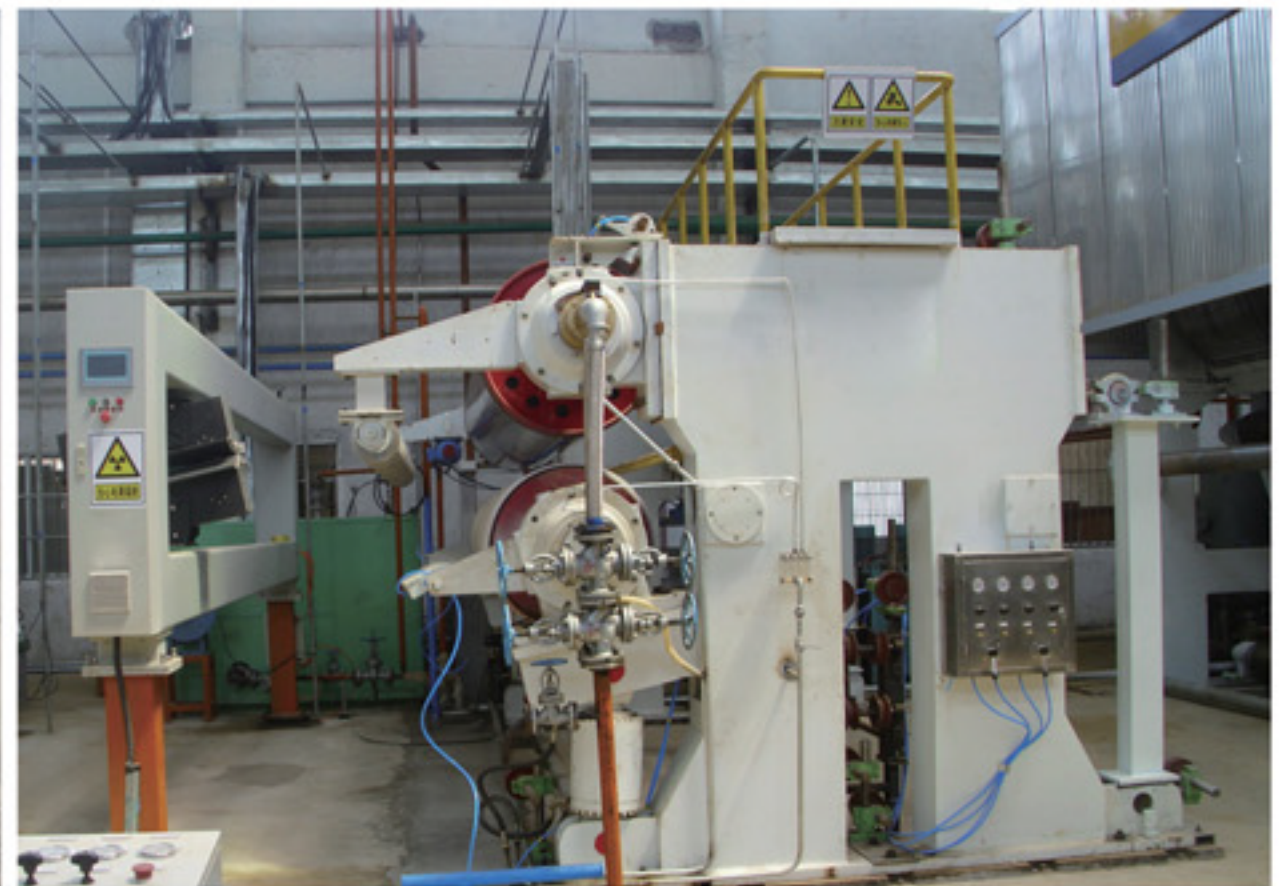
Trim width (mm)	1575	1760	1880	2100	2400	2640	2850	3200	3400	3600	3800	4000	4200	4400	4600	4800	5000
Gauge (mm)	1990	2190	2290	2540	2840	3050	3260	3610	3810	4230	4430	4630	4830	5030	5230	5430	5630
Working speed (m/min)	60-120																
Max finished roll diameter (mm)	1200-1800																
Max paper layboy (mm)	1500																



## Soft /hard calender

### Design features:

- ◇ Opening type machine rack helps to flexibly choose layout plan for calender area.
- ◇ All kinds of test and control system are used to protect soft roller surface.
- ◇ Paper has good printability and luster.
- ◇ Paper lateral uniformity and strength are improved.
- ◇ Optimized size to reduce restriction of paper width and working speed.



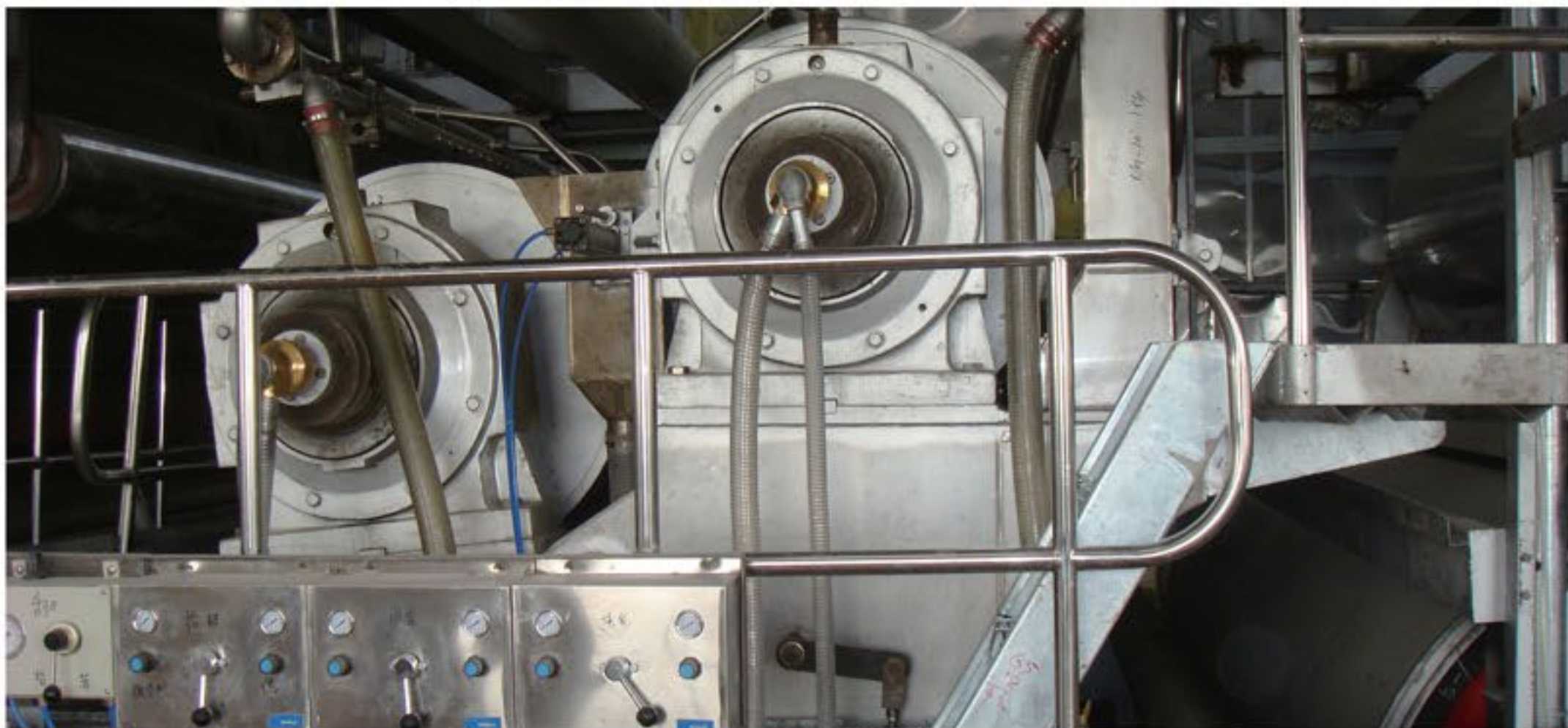
### Main technical data:

Applicable paper type	Coated white paperboard/ ivory board/ Taxis base paper/ Decorative base paper/ newsprint paper/ writing printing paper/ cast coated paper/ Carbonless copy paper
Width (mm)	1000-10000
Working speed (m/min)	100-1000
Linear pressure (KN/m)	50-220



### Sizing press

It is used for surface sizing of cardboard paper, corrugated base paper, writing and printing paper, offset paper and so on. The maximum width of the sizing machine can be 5600mm.







### Paper converting and packaging equipments

---

- ★ Gray paperboard/white paperboard coating machine
- ★ Carbonless copy paper coating machine
- ★ Thermal paper coating machine
- ★ Coated art paper coating machine
- ★ Carton Box Production Lines
- ★ A4 cutting and finishing production lines
- ★ Wrapping machine
- ★ Packaging and conveyor line



## Cardboard paper coating machine





## Cardboard paper coating machine





## Carbonless copy paper coating machine

The carbonless copying paper coating line can produce the first layer, the middle layer and the bottom layer of the carbonless copying paper at the same time.



**Thermal paper  
coating machine**

**Coated art paper  
coating machine**





## ※Paper converting and packaging equipments



◆Carton Box Production Lines



◆A4 cutting and finishing production lines



◆Paperboard packaging system



◆Paperboard packaging system



◆Kraft paper packaging equipment



◆Stretch wrapping machine





# Bridge Global Trade

Together We All Achieve..

**UAE (Head Office):** Flat-1116, Floor-11, Al Bafta Grand Tower, Al Barsha-1, Dubai, UAE.

**KSA Office:** Irak Bin Khaled Bin Sabeeh Al Murri Street, PO Box: 42315 Al Dhahirah Dist., Medina, Kingdom of Saudi Arabia.

**Bangladesh Office:** Flat no: GA, House: 409/GA/A, SP Road, South Paik Para, Mirpur, Dhaka-1216, Bangladesh